



**Thursday and Friday
September 28th & 29th, 2023
8:00 am - 12:30 pm**

2023



2023 Exhibitors & Equipment Donators

- ❖ A.J. Leblanc Heating Inc.
- ❖ Alta Equipment Company
- ❖ American Welding Society
- ❖ Apprenticeship NH
- ❖ Asplundh Tree Expert
- ❖ ATG Advantage Truck Group
- ❖ Ballard Truck Center
- ❖ Bensonwood Homes
- ❖ CCB, Inc.
- ❖ Chappell Tractor
- ❖ Charters Brothers Construction, LLC
- ❖ Cianbro
- ❖ City of Concord, NH
- ❖ City of Manchester
- ❖ Cobb Hill Construction
- ❖ Dead River Company
- ❖ DECCO, Inc.
- ❖ E J Prescott
- ❖ E.D. Swett, Inc.
- ❖ Eastpoint Equipment Rentals, LLC.
- ❖ Eckman Construction
- ❖ Eversource
- ❖ Fulcrum Associates, LLC

2023 Exhibitors & Equipment Donators

- ❖ Fuss & O'Neill
- ❖ Girls at Work
- ❖ Granite State Plumbing & Heating, LLC
- ❖ Green Mountain Communications, Inc.
- ❖ I Build NH/VT (an initiative of ABC NH/VT)
- ❖ IBEW 490 Electrical Training Center
- ❖ Lakes Region Community College
Electrical Technologies
- ❖ LaValley/Middleton Building Supply
- ❖ Lewis Builders Development and
HAWSCO
- ❖ Lincoln Tech
- ❖ Longchamps Electric/ECBA
- ❖ Maine Drilling & Blasting
- ❖ Manchester Community College
- ❖ Mas-Con Corporation
- ❖ Methuen Construction
- ❖ Milton CAT
- ❖ Milton Rents

2023 Exhibitors & Equipment Donators

- ❖ Mongoose Power Solutions - OnSite Power Academy
- ❖ Morquip Rentals & Sales
- ❖ Multi-Weld Services, Inc.
- ❖ National Association of Women in Construction
- ❖ NEC Group
- ❖ New England Chapter ISA
- ❖ New England Concrete Manufacturers Assoc - Women in Hardscape & Masonry Committee
- ❖ New England Kenworth
- ❖ New England Laborers' Apprenticeship Program
- ❖ New Hampshire Army National Guard
- ❖ New Hampshire Department of Transportation
- ❖ New Hampshire Good Roads Association
- ❖ New Hampshire Water Pollution Control Association (NHWPCA)

2023 Exhibitors & Equipment Donators

- ❖ New Hampshire Water Works Association
- ❖ NH Public Works Association
- ❖ North Atlantic States Carpenters Training Fund
- ❖ North Branch Construction
- ❖ North Country Welding Academy
- ❖ Northeast Paving & Cold River Materials subsidiaries of VINCI Construction
- ❖ Northern Maine Community College
- ❖ Northern Tree / KJK Arbor
- ❖ NorthPoint Construction Management, LLC
- ❖ Optiline Enterprises, LLC
- ❖ Palmer and Sicard, Inc
- ❖ Pennichuck Water Works
- ❖ PeopleReady Skilled Trades
- ❖ Pike Industries, Inc
- ❖ Piscataqua Landscaping & Tree Service

2023 Exhibitors & Equipment Donators

- ❖ Portsmouth Naval Shipyard
- ❖ RBG Inc
- ❖ Reed & Reed
- ❖ Reeds Ferry Sheds
- ❖ Renaissance Acres Tree Care
- ❖ Resource Options
- ❖ S. W. Cole Engineering, Inc.
- ❖ Sargent
- ❖ Sheet Metal Local 17 NH Training Center
- ❖ Sitech
- ❖ Southern New Hampshire University
- ❖ State of NH Department of Education
- ❖ Stay Safe Traffic Products, Inc.
- ❖ Terracon Consultants
- ❖ The New England Consortium
@UMass Lowell
- ❖ The NH School of Mechanical Trades
- ❖ Tree Care Industry Association
- ❖ Tree Line
- ❖ Universal Technical Institute
- ❖ US Army

2023 Exhibitors & Equipment Donators

- ❖ US DOL / OSHA
- ❖ USDOL - Office of Apprenticeship
- ❖ Vermont State University
- ❖ White Mountains Community College

NH Construction Career Days Event Rules

- ❖ Safety is number one - hard hats and safety glasses must be worn at all times.
- ❖ Closed toed shoes are required at this event.
- ❖ Bracelets issued at entry **MUST BE** worn.
- ❖ **DO NOT** cross caution tape at any point on fairgrounds, unless instructed by operator or NH-CCD Staff.
- ❖ **NO SMOKING.**
- ❖ Represent your school and community professionally and respectfully.

Anyone violating these rules will be promptly directed to “get back on the bus”

***Thank you for joining us and
have fun!!***



A GREAT PLACE TO WORK, RIGHT IN YOUR NEIGHBORHOOD

- ▶ Full-time, part-time, and internship opportunities in a variety of fields
- ▶ Modern technology and state-of-the-art facilities
- ▶ Competitive pay and benefits
- ▶ Extensive training programs and resources
- ▶ Tuition reimbursement

Milton **CAT**

As a privately held company headquartered in Milford, MA, **Milton CAT** is the Northeast's premier dealer for Caterpillar machines, engines, power systems equipment, parts, and service. We also sell and support complementary product lines including Genie, Weiler, and Sullair.

SITECH
NORTHEAST

SITECH Northeast is an authorized, independent provider of Trimble positioning, machine control technology, training, support, and service. We provide customized construction technology solutions to a variety of industries including general excavation, roadbuilding, utility work, and residential development.

To learn more about the opportunities at Milton CAT and SITECH Northeast visit: miltoncat.com/careers

30 Industrial Drive Londonderry, NH, 03053

Milton CAT and SITECH Northeast are equal opportunity employers that value the strength diversity brings to the workplace.



Discover with us exciting careers
that shape the world around us.



Find career opportunities at
pikeindustries.com/careers

Equipment

What Equipment Operators Do

Equipment is a huge part of almost any construction project, residential or commercial, and includes bulldozers, excavators, forklifts, skid-steers, and of course, cranes. **Construction equipment operators use machinery to move both materials and earth before and during the construction process.** They clear the site, drive piles for the foundation, install underground utilities, build roads and move materials around the site as needed. Another part of this job involves setting up and inspecting equipment, and may also include making adjustments, performing maintenance, or minor repairs. Due to the increasing use of computerized controls, understanding of electronics and mechanical aptitude is critical.

How Much Can I Earn?

As an entry-level equipment operator, you might start at \$50,000 per year. As you learn and increase your skill set, you can quickly advance to a median salary of \$65,000 per year. An experienced operator can make upwards of \$80,000 a year!



What Can I Expect from a Career Operating Construction Equipment?

Equipment operation is a **critical and complex process**, and takes a **highly-skilled person that can concentrate and focus on the task at hand**. There is a good demand for operators throughout the country. Operators typically work outdoors and may work irregular hours to keep pace with the project. Equipment operators need to be in good physical condition, have good balance, be able to judge distances, and should not have a fear of heights. When first starting out, equipment operators will handle light machinery under the supervision of an experienced operator. With time and experience, operators can advance to heavier equipment such as bulldozers and cranes.



OWN IT!

Ever thought about owning a construction company?
At Sargent, each employee shares a stake in the
value, success, and profit of the company. Become
an Employee-Owner today. Visit sargent.us/apply

**BUILD YOUR LIFE
WITH US**

SARGENT
100% EMPLOYEE-OWNED

Sargent.us | 3 Godfrey Dr. Orono ME, 04473



What Surveyors Do

Surveyors measure and map the earth's surface to determine precise boundaries for land, water, and air spaces. Many different industries require surveyors including architectural & engineering firms, forensics, government agencies, mining & utility companies, & real estate developers. Land surveyors research legal records, analyze data, and communicate their findings. Surveyors use a variety of tools, technical instruments, and computer software. They sketch, plot maps, photograph, and write reports. Construction surveyors are often the first professionals on the job site, they also are integral in rebuilding projects such as reconstructing buildings, roads and bridges after storms, earthquakes and wars. Hydrographic surveyors measure and map the location and shape of features under oceans, rivers and lakes. They use specialized technology to identify underwater hazards, look for oil, and guide dredging.

Surveyor

How Much Can I Earn?

Entry-level surveyors earn approximately \$54,000 per year. With experience, you can quickly advance to a median salary of \$75,000 per year. A professional land surveyor can make upwards of \$85,000 per year!

What Can I Expect From a Career in Surveying?

Surveying is generally a cooperative field, so good interpersonal skills, communication, and teamwork are key.

No day or project is ever the same. It can be **physically & mentally challenging** – standing & walking for hours, and carrying equipment. Good eyesight and hearing are important. You will be given a specific amount of responsibility during your land surveying internship, where you will spend a lot of time assisting in obtaining data in the field, then processing, compiling and aiding in the synthesis of data and creation of final work products. Boundary surveyors work with mathematical certainty and legal uncertainty. Attention to detail and good math skills are characteristics of a good candidate. Surveyors work in the field and the office for various parts of their job. According to U.S. Dept. of Labor the need for land surveyors will outpace the average growth for all occupations. The average age of many professional surveyors is 57, many states are losing 10% of these professionals to retirement every year.



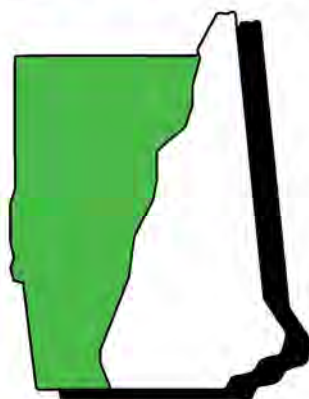


NEW HAMPSHIRE
**PUBLIC WORKS
ASSOCIATION**



**NORTHEAST
PAVING**

COLD RIVER



MATERIALS



SNHU

School of Engineering, Technology, and Aeronautics



NORTHPOINT
CONSTRUCTION MANAGEMENT

HUDSON, NH | 603.546.2000

PREMIER DESIGN/BUILD
CONSTRUCTION MANAGEMENT

CONTACT US TODAY



PISCATAQUA

LANDSCAPING
& TREE SERVICE

PROUD SUPPORTER OF NHCCD
WWW.PISCATAQUALANDSCAPING.COM





Civil Engineer

What Civil Engineers Do

Civil engineers plan and design buildings, bridges, roadways, dams, and tunnels. They work closely with structural and geotechnical engineers to utilize the best building materials for each job while taking into account safety factors such as soil and climate conditions. Civil engineering is very closely related to Environmental Engineers who work to improve the natural environment, provide clean water through complicated treatment systems, design landfills and help remediate pollution. In this career, you may design and/or provide construction inspection of a new water, drainage or sewer piping system. Civil Engineers typically work at a private consulting firm, for a site developer, construction contractor, at NHDES, NHDOT, or for a Town or City in their Engineering Department.

How Much Can I Earn?

As an entry-level civil engineer, you can start at \$70,000 per year. As you learn and increase your skill set, you can quickly advance to \$100,000 per year. A skilled and experienced civil engineer can make upwards of \$130,000 a year!

What Can I Expect from a Career in Civil Engineering?

Civil Engineers must have good leadership skills as they are often responsible for an entire project's design and implementation. **Mentally challenging** - strong math and technical skills, good visualization and ability to read blueprints and critical thinking, are needed to solve complex problems and identify potential solutions.

Communication skills are key when presenting projects to clients or the public. As a Civil Engineer you will be working in a **team environment** to see a project through completion. Many civil engineers are **full-time construction inspectors** and must be very observant and be able to think on their feet to deal with field changes as they arise. Civil Engineers work both outdoors and indoors as they do the various parts of their job. Each job site has different challenges and the career itself offers a huge variety of work and a great starting salary.



Our new look reflects our journey of evolving how we can be even better partners to our clients and a great place for our employee-owners to grow and make a difference.

Contact Your
Navigator

(603) 647-9700

Terracon.com/Manchester

Terracon

- Facilities
- Environmental
- Geotechnical
- Materials



Safety

What Safety Professionals Do

Safety Professionals outline and implement training programs about employee safety, accident prevention and investigation. They may also serve as client representation during regulatory audits and informal conferences, work-site compliance inspections, and safety program development/audits. As a safety instructor you might teach work place safety for electrical, confined space, chainsaw operation, work zone safety, OSHA certification classes and other site safety management.

How Much Can I Earn?

As an entry level Safety Representative Professional, you can start at \$64,000 per year. As you learn and increase your skill set, you can quickly advance to a median salary of \$80,000 per year. An experienced Safety Professional can make upwards from \$96,000 a year!



Granite State Chapter, NH



What Skills Do I need for a Career in Safety?

Communication- You will need to be able to communicate clearly with others and be able to spot potential hazards on a job site. **No day or event is ever the same.** You might be on different locations or working with different people every day. **Mentally challenging** – the ability analyze sites for potential hazards and risks. **Math and Accounting and Marketing** – There's real potential to be your own boss, and these fundamentals are needed to sell services or products and administer business funds. **High energy and outgoing personality** – Your passion will attract and engage people about the importance of safety.



Build an exciting career in construction



ABC is a proud supporter of New Hampshire Construction Career Days.

ABC members support career exploration opportunities and encourage all students to consider a career in the skilled trades!

abcnhvt.org

WHY CONSTRUCTION?

- great income potential
- equal opportunity
- career stability
- earn as you learn
- team environment
- community impact



Sign-up for the I Build NH email list.



IBuildNH.org



Come grow with us and discover the many paths to a rewarding telecommunications construction career with us!



603.717.7117
www.greenmtncomm.com

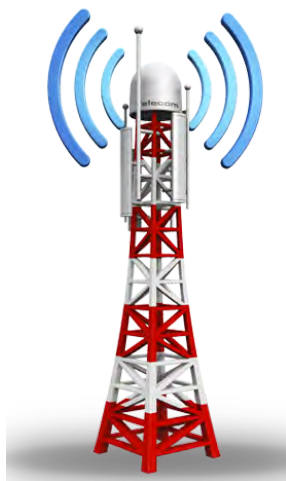


What can I expect from a career in the construction wireless communications industry?

The construction wireless industry is rapidly transforming the way we live, work, and play for many years. There is consistent workload and excellent opportunities for career growth. Currently, the wireless construction industry has an estimated shortage of 20,000 workers nationwide.

Workers who are safety conscious, career oriented, and enjoy working outside are excellent candidates for this field. The work itself is a mix of skilled labor with technical aspects in a team environment.

We will provide you all the technical and safety training needed from entry level positions to management.



Build an exciting career in construction

What do construction tower technicians do?

Construction tower technicians build and maintain the wireless communication site infrastructures that help keep people connected with their mobile devices and public safety networks. The majority of the work is completed on the ground, some of the work is done at a bird's-eye view, throughout New England outdoors, and in some of the most picturesque scenery. Some of the jobsites are remote and require using equipment such as ATV's and snowmobiles. Sometimes, helicopters are used to deliver equipment in challenging site locations.

How much can I earn?

As an entry-level telecommunications technician, you can start at \$55,000 per year. As you learn and increase your skill set you can quickly advance to a median salary of \$70,000 per year. An experienced installer can make upwards of \$93,000 a year!





What Line Workers Do?

Line workers install and maintain the power grid, a network of power lines that moves electricity from generating plants to customers. They routinely work with high-voltage electricity, which **requires extreme caution**. The electrical current can range from hundreds of thousands of volts for long-distance transmission lines that make up the power grid to less than 10,000 volts for distribution lines that supply electricity to homes and businesses. Line workers who maintain the interstate power grid work in crews that travel to locations throughout a large region to service transmission lines and towers. Workers employed by local utilities work mainly with lower voltage distribution lines, maintaining equipment such as transformers, voltage regulators, and switches. They also may work on traffic lights and streetlights.

How Much Can I Earn?

As an entry-level line worker, you can start at \$64,440 per year. As you learn and increase your skill set you can quickly advance to a median salary of \$93,310 per year. An experienced line worker can make upwards of \$103,230 a year!

Line Worker

Want to
learn,
lead
and succeed?

Eversource is proud to power
New Hampshire Construction
Career Days.

Learn more at jobs.Eversource.com



EVERSOURCE

What Can I Expect from a Career in Line Work?

The Line worker occupation can be **physically demanding**. Line workers must be comfortable working at **great heights and in confined spaces**. Despite the help of bucket trucks, all line workers must be able to **climb** utility poles and transmission towers and **balance** while working on them. Their work often requires that they drive utility vehicles, travel long distances, and work outdoors.

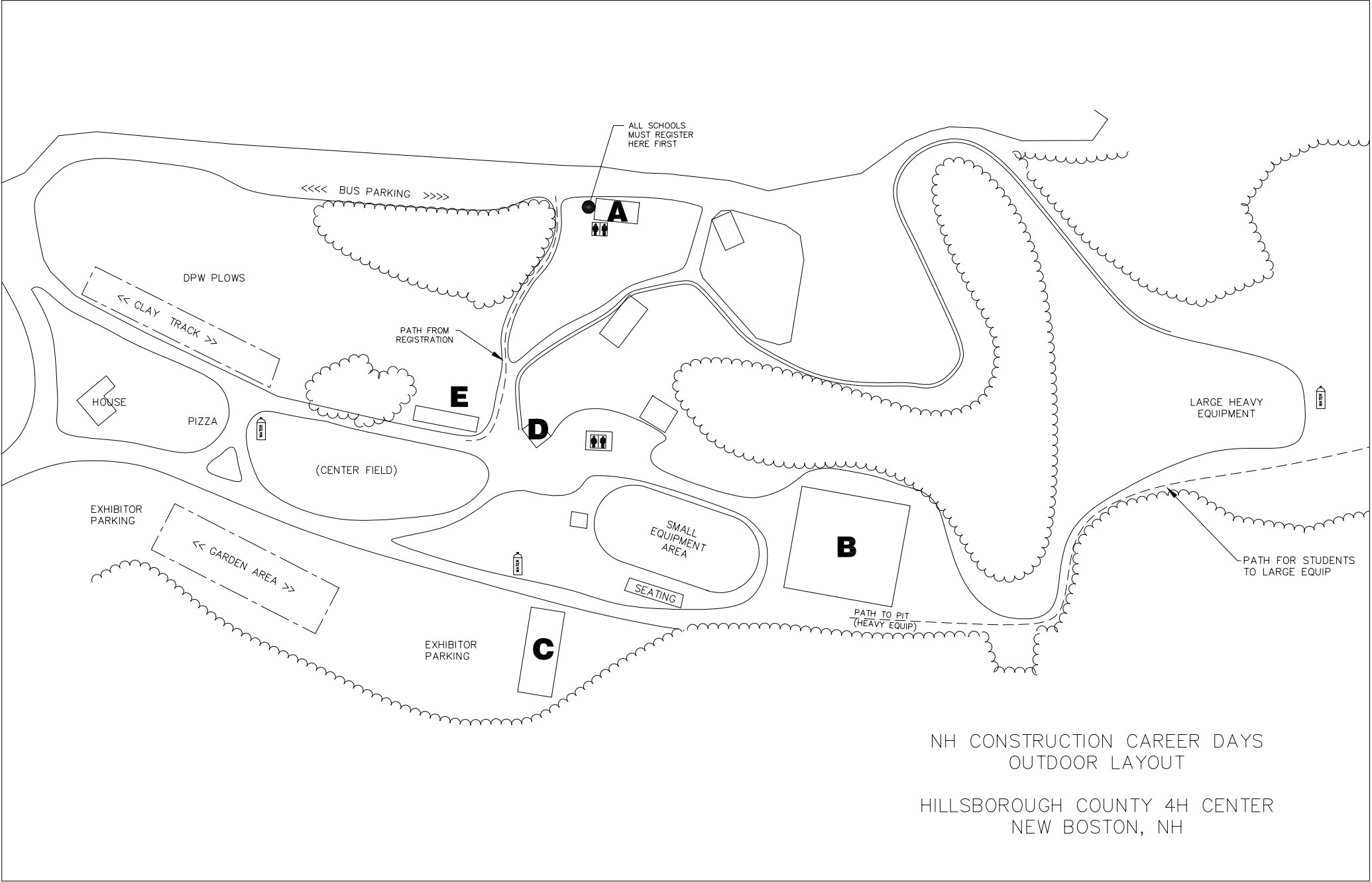
Line workers often must work under **challenging weather conditions**, such as in snow, wind, rain, and extreme heat and cold, in order to keep electricity and telecommunications flowing.



Build an exciting career in construction

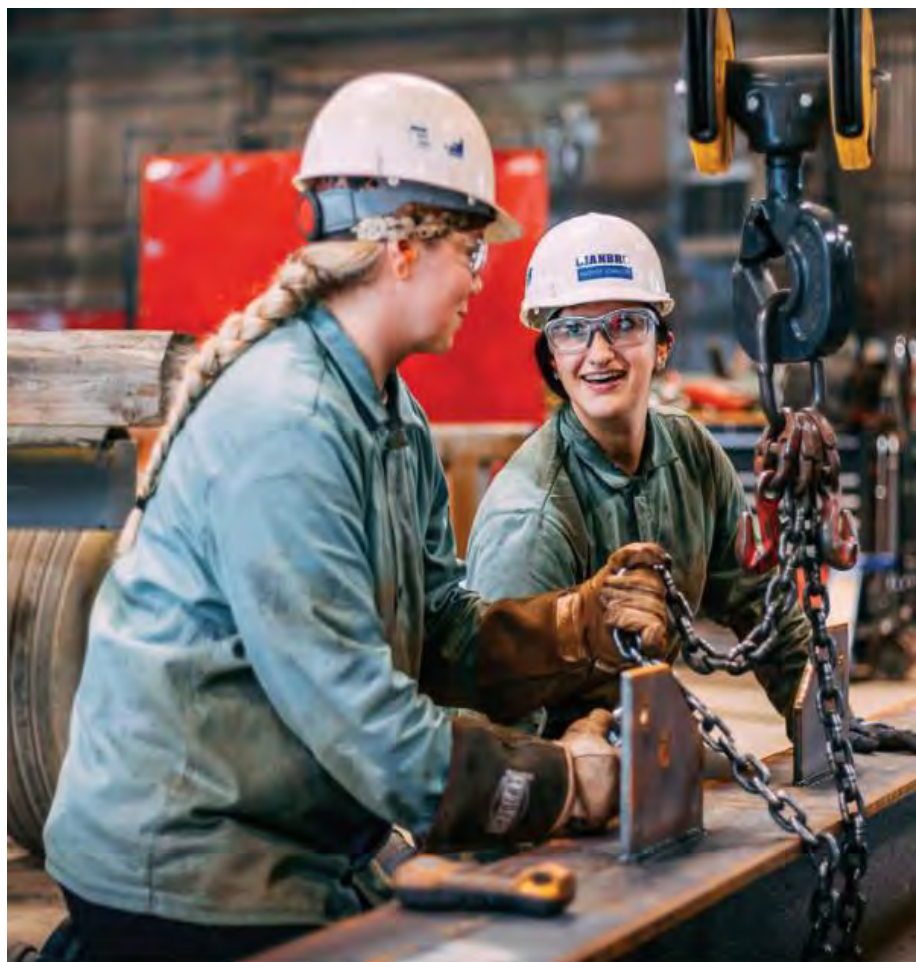
Insert PDF MAP should open up to two pages (LEFT SIDE)

**DO NOT PRINT THIS PAGE -
IT IS JUST A REMINDER THAT THE
NEXT LANDSCAPE VIEW PAGE YOU
SEE IS A TWO PAGE SPREAD**



Insert PDF MAP should open up to two pages (RIGHT SIDE)

**DO NOT PRINT THIS PAGE -
IT IS JUST A REMINDER THAT THE
PREVIOUS LANDSCAPE VIEW PAGE
YOU SEE IS A TWO PAGE SPREAD**



CIANBRO

DISCOVER YOUR CAREER WITH AN INDUSTRY-LEADER

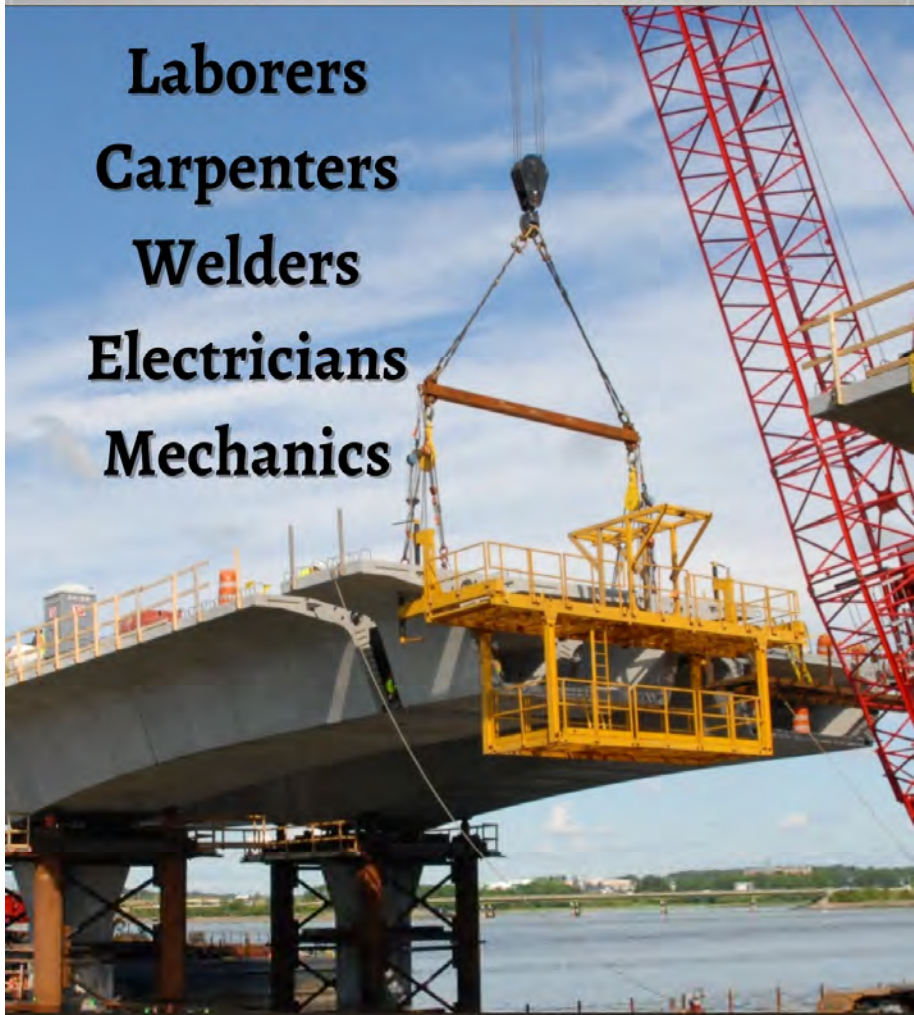
Apply online at cianbro.com
or scan the QR code.

Cianbro is an employee owned, tobacco-free, equal opportunity employer, including disability and protected veteran status.



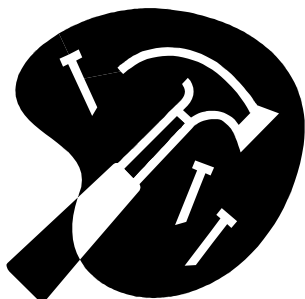
REED & REED

**Laborers
Carpenters
Welders
Electricians
Mechanics**



Join our TEAM!

Apply Online www.reed-reed.com



What Carpenters Do?

Carpenters are key to the success of a construction project. They **cut, shape, fit, and assemble** building materials to construct buildings, bridges, highways, docks, and industrial plants. Carpenters today build with wood, metal, concrete, plastics, composites of multiple materials, and more. Following blueprints, they **measure, lay out material, and then build** foundations, walls, floors, ceilings, and roofs. As a carpenter, you can specialize in areas like structural framework, concrete formwork, interior trim and cabinetry, commercial carpentry, and more. In this craft, you get to use cool power tools like pneumatic nail fasteners, power saws and drills, and laser leveling tools.

How Much Can I Earn?

As an entry-level apprentice or carpenter, you can start at \$39,440 per year. As you learn and increase your skill set, you can quickly advance to a median salary of \$50,900 per year. An experienced carpenter can make upwards of \$59,590 a year!

Carpentry



What Can I Expect from a Career in Carpentry?

Carpentry is challenging and satisfying work. **No day is ever the same.** Even the same job site is different each day. It can be **physically challenging** – there is lifting, climbing, and carrying involved. It is also **mentally challenging** – math, quick calculations, the ability to visualize, and the ability to make quick decisions are all part of the job. Someone who can do precise work and needs little supervision is a good candidate. **Carpenters are in high demand** for any given job. If you enjoy hands-on work, working outdoors, and seeing the results of your work, you can go far in this field.



build an exciting career in construction



Welding

What Welders Do?

Welders apply heat to metal parts to join them together by making a permanent bond. Because of its strength, welding is used to join beams when constructing buildings, bridges, and connecting pipes. There are several different types of welding in use, depending on the material being welded and its intended use.

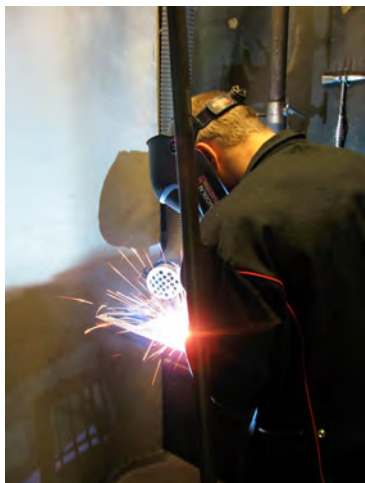
Arc welding is the most common type. This uses a welding rod carrying an electrical circuit. The heat created by the current causes the steel core of the rod and the surface being welded to melt together.

Gas tungsten arc or TIG welding is often used with stainless steel or aluminum and utilizes welding rods.

Gas metal arc or MIG welding is often used with a spool of continuously fed wire. This allows the welder to join longer stretches of material.

How Much Can I Earn?

As an entry-level apprentice or welder, you can start at \$38,110 per year. As you learn and increase your skill set, you can quickly advance to \$49,440 per year. An experienced welder can make upwards of \$56,410 a year!



What Can I Expect from a Career in Welding?

If you are interested in a career that is a combination of science, math, and art, welding is a great choice. It requires steady hand-eye coordination, knowledge of materials and metallurgy, and tactility. Welding is challenging and satisfying work. **No day or project is ever the same.** It can be **physically challenging** – there is standing, climbing, and bending involved. Some welders work underwater or high above the ground on a scaffold. It is also **mentally challenging** – the ability to read blueprints, calculate dimensions and materials needed, and understand basic chemistry is a big part of the job. Someone who can do careful work and needs little supervision is a good candidate.





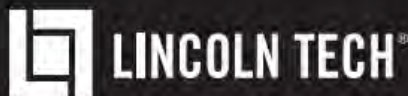
WE CAN HELP YOU MAKE PLANS FOR A REWARDING CAREER!

Our hands-on training programs can help you learn the skills that hiring managers are looking for. Lincoln Tech has been training America's workforce for over 75 years, and you can complete your training and be on-site in about a year*!

Get information on career fields that interest you:

- | | |
|---|---------------------|
| ■ Automotive | ■ Diesel |
| ■ Computerized
Manufacturing | ■ Electrical |
| ■ Collision Repair | ■ HVAC |
| | ■ Welding |

Call 800-243-4242 to schedule a campus tour!



97 Newberry Road ■ East Windsor, CT 06088

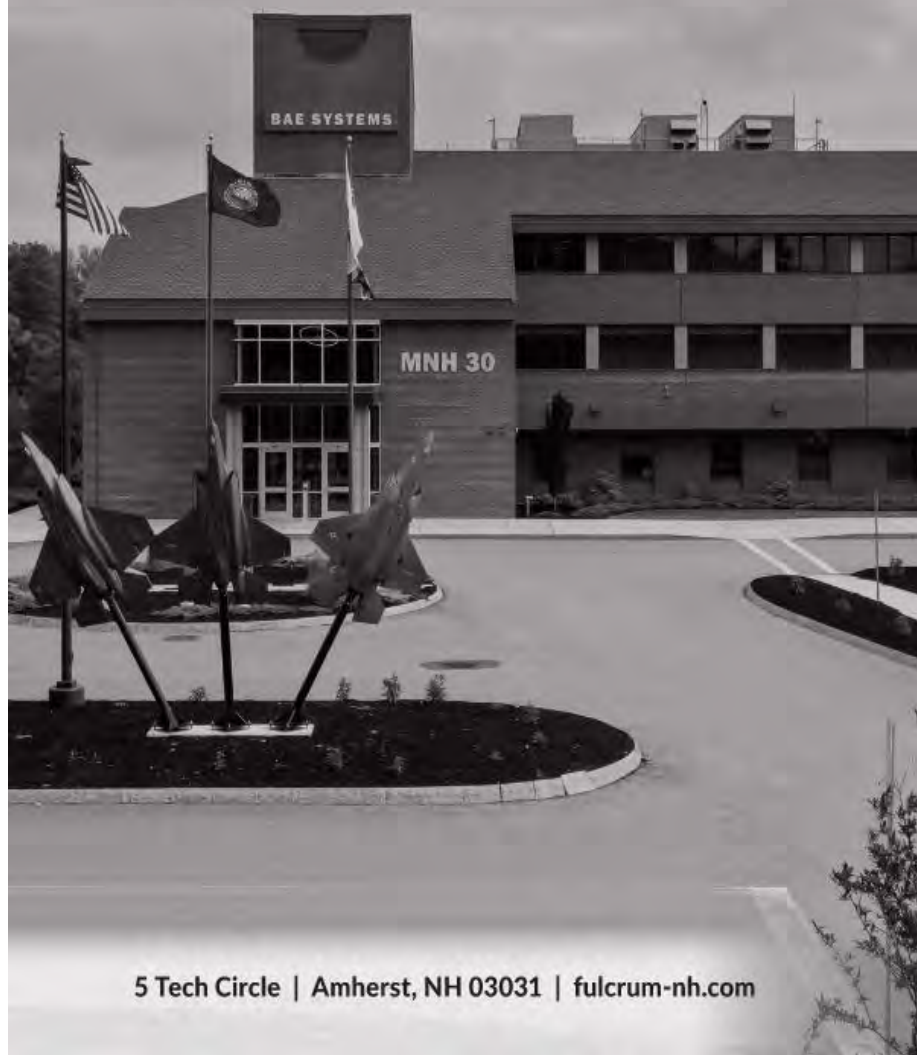
LincolnTech.edu



Lincoln Technical Institute East Windsor is a branch of the New Britain, CT campus. This institution is regulated by: State Workforce Innovation Council Office for Career and Technical Schools, 10 N. Senate Ave., Suite SE 203, Indianapolis, IN 46204, (317) 234-8338 or (317) 234-8339. Financial Aid is available for those who qualify. *Program lengths vary by campus and shift. 66/137040923-CR3617

Fulcrum **CONSTRUCTION. MANAGED.**

FULCRUM PRE-CON® | CONSTRUCTION MANAGEMENT | DESIGN - BUILD



5 Tech Circle | Amherst, NH 03031 | fulcrum-nh.com



Promoting The Construction Industry
To New Hampshire's Youth

What can I expect from a career in Pipefitting?

Pipefitting is a career that draws upon numerous skills such as **math, design, print reading, physical dexterity and attention to detail**. Pipefitters sometimes work with a Pipe Welder to fabricate piping systems that are used to distribute gases or liquids. Pipefitters should be able to work within precise limits and standards of accuracy and make decisions based on measurable criteria while visualizing objects in three – dimensions as they translate drawings and plans into actual piping systems running throughout a building.

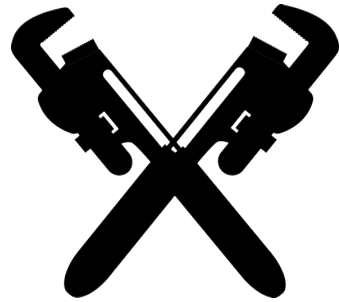
What Pipefitters Do?

A Pipefitters typical duties include the selection of materials to meet the job specifications, planning the sequence of assembly to avoid obstructions, the preparation of the components for assembly and the installation of the piping sub-assembly. Pipefitters work with various piping materials such as carbon steel (CS), stainless steel (SS), copper and plastics. The joining methods vary from welding and threading for CS and SS to soldering and brazing for copper and fusion for plastics. Pipefitters are required to **work skillfully with their hands**, often times at elevations that require man-lifts, ladders, or scaffolding. A physically taxing trade- it requires **balance, strength, and dexterity**.

Pipefitter

How Much Can I Earn?

As an entry-level pipe fitter, you can start at \$39,810 per year. As you learn and increase your skill set, you can advance to \$54,660 per year. An experienced pipe fitter can make upwards of \$65,540 a year!



Now Hiring!
Licensed Plumbers & Pipefitters
More than a job—it's YOUR career!
1-800-332-2611

Call to schedule an interview TODAY!
An Equal Opportunity Employer

www.DECCO.com/careers



Plumbing

What Plumbers Do

Plumbers **install and repair water, disposal, drainage, and gas systems** during the beginning stage of a construction project. Later in the project, they return to **install and connect appliances and other plumbing fixtures**, such as bathtubs, showers, sinks, toilets, dishwashers, and water heaters.

Plumbers can be found on just about every type of construction project: homes, office buildings, schools, hospitals, and power plants, to name just a few. This trade works with a wide variety of piping material, such as copper, plastic, cast iron, and steel. In addition to the prep work and appliance installation, plumbers cut and bend pipe to the needed length. They connect the pipes using appropriate fittings.

How Much Can I Earn?

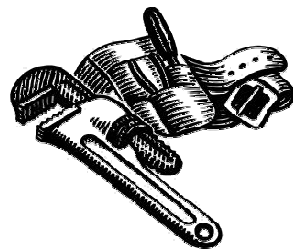
As an entry-level apprentice or plumber, you can start at \$39,810 per year. As you learn and increase your skill set, you can quickly advance to \$54,660 per year. An experienced plumber can make upwards of \$65,540 a year!

What Can I Expect from a Career in Plumbing?

From prep work to installing appliances to inspection and maintenance, **plumbing is all about variety**. Plumbers use many kinds of hand tools, should have **strong math skills**, and be able to **read blueprints accurately**. It is challenging and satisfying work. **No day is ever the same**. Even the same job site is different each day. It can be **physically challenging** – there is lifting, climbing, bending standing and carrying involved. It is also **mentally challenging** – knowledge of the building codes, quick calculations, and the ability to visualize are all part of the job. Most local communities require **plumbers to be licensed**. If you enjoy variety, hands-on work, working both indoors and outdoors, you can go far in this field.



Promoting The Construction Industry
To New Hampshire's Youth



Build an exciting career in construction

Apprentices **WANTED**

Join the Team

That's Building New Hampshire



WAGES

BENEFITS



@Local668Laborers
@Local976Laborers



To apply e-mail:
nick@nelapp.org
Web: nelaborerstraining.org

Visit us



NEW ENGLAND LABORERS' TRI-FUNDS

Join a group of professionals who are dedicated to building New Hampshire's economy by providing quality environmental responsible housing, creating good paying jobs and advocating on your behalf.



NH Home Builders Association | 119 Airport Road | Concord, NH | 603-228-0351 | www.nhhba.com





Creative Carved Signs
Lasting, personalized craftsmanship

Keith R. Schoenenberger
Craftsman

keith@creativecarvedsigns.com
978-692-7900
38 Lowell Rd Westford, MA 01886

www.CreativeCarvedSigns.com



— Door & Hardware

How Much Can I Earn?

As an entry level technician in the fabrication shop, warehouse or technical office position you could start at \$46,190/year.

As you become more proficient and hone your skills, a median salary can be as much as \$63,510/year. DHC and DHSC credentials can earn you up to \$80,832/year.

As a skilled credentialed consultant expect a six-figure salary.

What Can I Expect from a Career in the Door & Hardware Industry?

The skills of Door & Hardware specialists provide the balance of **life safety and security** for the millions of people who work, play and live in buildings. Those who are working toward or have already achieved—a certified consultant status, know the many of hours it takes to learn the aspects of the Door & Hardware industry, plus the **attention and effort** required to hone that knowledge into a skill that will satisfy the many different needs of a building. Door & Hardware experts are not just an **elite niche** in the Construction Industry, but an integral one!

What do Door & Hardware Technicians and Professionals do?

The Door & Hardware Industry provides **specialized products and services** to the construction industry. The door, frame, and hardware which make up the door openings that we walk through every day are actually **very complex** and technical assemblies. Technicians are also responsible for providing the correct products so that they **meet all building codes**, which include Fire Code, Life Safety Code, and ADA (Americans with Disabilities Act) Standards. Consultants and specification writers often advise owners, developers and architectural design teams as to the best product mix for their project. Detailers use their technical skills to develop door and hardware schedules.

In distributorships there are often fabrication shop and warehousing positions, along with office positions, such as estimator and purchaser at the entry level. Sales and Project Management would be junior level positions, and beyond that are Door & Hardware Technician, or DHT. Consultants are involved at each project level. Certified Consultants have the widest knowledge base and are highly skilled so The person that knows the most can earn the most.





— Drywall & Painting

What Drywall & Paint Professionals Do

Once the interior of a building is roughed-out, painters and drywall professionals finish the walls and ceilings to make the surfaces clean, consistent, and attractive. They help make the building ready for occupancy. Drywall is the “skin” of a building’s interior; paint and other surface finishes are like a cosmetic.

Drywall Installers cut, fit, and fasten sheets of drywall to the inside framework of buildings. The sheets are generally in a standard size (4’x8’), and some custom cutting is almost always required to fit the design.

Drywall Finishers prepare the panels for painting by taping and finishing the seams where the sheets of drywall come together. They also sand and prepare the surface to receive its final finish coat.

Painters add color and finish to the drywall to be cosmetically pleasing.

How Much Can I Earn?

As an entry-level drywall or painter professional, you can start at \$25,560 a year. As you learn and increase your skill set, you can advance to a



What Can I Expect from a Career in Drywall or Painting?

If you are interested in handling a variety of tools, good at visualizing, and can do accurate work, dry walling & painting can be a great career. It requires hand-eye coordination, physical strength, and strong math skills, over all it is challenging and satisfying work. **No day or project is ever the same.** It can be **physically challenging** – there is standing, climbing, and bending involved, as well as standing on stilts. It is also **mentally challenging** – the ability to visualize and to calculate dimensions quickly is a big part of the job. Someone who can do careful, neat work and needs little supervision is a good candidate.

BUILD YOUR
CAREER WITH US



For More Information Visit:

www.MethuenConstruction.com/Careers

603.328.2222



Build an exciting career in construction

**MANCHESTER AREA
HUMAN RESOURCES ASSOCIATION**

EMERGING LEADERS COMMITTEE

Helping prepare local schools and institutions to meet challenges and opportunities they will face in the workplace.

Manchester Area

HUMAN RESOURCES ASSOCIATION

To learn more, visit www.mahra.org/workforce-readiness



IBEW Local Union 490 JATC

Paid Apprenticeship

Low Tuition

**Apply for transferable
college credits**

Health and Retirement

**Commercial, Industrial
and Power Generation**

**Classes in a nationally
recognized program**



APPLY NOW

www.ibew490.org

What Electricians Do

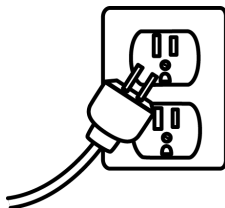
Can you imagine a world without electricity? Electricians are critical not only to the construction industry but to modern day life as we know it. They **install, connect, test, and maintain electrical systems** that are used for a variety of purposes, from lighting homes to running machinery, communications equipment, and much more. Electricians need to be able to **read blueprints** to locate outlets, circuits, panel boards, and other equipment. In most areas, **electricians must be licensed**. In this craft, you'll need to know the National Electrical Code as well as state and local building codes. Your math skills and ability to visualize are very important. Electricity is serious: your work needs to be accurate, and you must be able to follow strict safety procedures.



Promoting The Construction Industry
To New Hampshire's Youth

How Much Can I Earn?

As an entry-level apprentice or electrician, you can start at \$39,370 per year. As you learn and increase your skill set, you can quickly advance to \$57,280 per year. An experienced electrician can make upwards of \$66,790 a year!



Electrical



What Can I Expect from a Career as an Electrician?

Electrical work is challenging and satisfying. **No day or project is ever the same.** Electricians work both indoors and outdoors. This craft can be **physically challenging** – there is standing, climbing, and carrying involved. It is also **mentally challenging** – code knowledge, math, quick calculations, the ability to visualize, and the ability to make quick decisions are all part of the job. Someone who can do precise work, has good hand-eye coordination, and needs little supervision is a good candidate. **The need for electricity is everywhere**, so jobs for electricians can be found all over the country.





Ask About Apprenticeship

Apprenticeships available in
Plumbing • Sheet Metal • HVAC

**PALMER
& SICARD, INC.**

Call today! (603) 731-6159

WWW.PALMERANDSICARD.COM

What HVAC Professionals Do

Have you ever been hot and turned on the air conditioner, or cold and turned on some heat? Thank an HVAC (Heating, Ventilation, and Air Conditioning) technician for the ability to maintain your comfort level. HVAC professionals **install, maintain, and repair a building's heating, cooling, and air circulation systems.** HVAC professionals **actually perform several trades and tasks.** They do some electrical work; carpentry; welding, piping; sheet metal; and even some IT work. In addition to heating and cooling, ventilation is a critical issue. The air in our buildings must be kept clean and circulated. HVAC systems can be installed both indoors and outdoors, depending on the structure. This trade works with a variety of material and equipment: air conditioners, fans, compressors, motors, heat pumps, furnaces, etc.

How Much Can I Earn?

As an entry-level apprentice or technician, you might start at \$41,620 per year. As you learn and increase your skill set, you can quickly advance to \$58,160 per year. An experienced professional can make upwards of \$67,040 a year!

HVAC

What Can I Expect from a Career in HVAC?

Doing prep work in the beginning of a construction project means cutting holes in walls, ceilings, and floors to install ductwork, pipes, and other parts of the mechanical system. In later stages, you are working with the actual equipment and detailed, final connections. HVAC professionals use a variety of hand tools, should have **strong math skills**, and be able to **read blueprints and specifications accurately**. HVAC is challenging and satisfying work. **No day is ever the same**. It can be **physically challenging** – there is lifting, climbing, carrying, and balancing involved. It is also **mentally challenging** – knowledge of local building codes, organizational skills, and the ability to visualize are all part of the job. If you enjoy variety, hands-on work, and working both indoors and outdoors, you can go far in this field.





Have you seen MCC lately?



**Visit www.mccnh.edu/openhouse
for a list of upcoming Open House dates**

1066 Front St., Manchester, NH | (603) 206-8100 | mccnh.edu

*We are always
proud to support*

New Hampshire Construction Career Days



INSURANCE • BONDS • BENEFITS

...an Assurex Global Partner
1-800-238-3840

Concord, NH • Portland, ME
Bennington, VT • West Lebanon, NH

FIND YOUR CREW

**"STABILITY, EXCELLENT TRAINING,
STRONG SAFETY CULTURE, RELIABLE
EQUIPMENT, SUPPORTIVE TEAMS"...**
THESE ARE JUST SOME OF THE
THINGS OUR TEAM MEMBERS SAY
ABOUT WORKING AT ASPLUNDH. IF
YOU ARE LOOKING FOR AN EXCITING
OPPORTUNITY TO ADVANCE IN A
CAREER WHERE YOUR DEDICATION,
SKILLS AND EXPERTISE ARE VALUED,
CONTACT US TODAY.



ASPLUNDH

ASPLUNDH.COM 1.800.246.7FREE

STRONG

Scan to
apply today!



MEMBER OF THE BAKER GROUP OF COMPANIES



Masonry

What Masons Do

Masonry is one of the most widely used materials in construction. Sidewalks, many homes, and commercial structures like office buildings, schools, and sports complexes are made with some form of masonry.

Bricklayers build walls, floors, fireplaces, chimneys, and other structures with brick, pre-cast masonry panels, concrete block, and other similar materials.

Stonemasons build stonewalls as well as set stone exteriors and floors, working with natural cut and artificial stone. Generally the work is non-residential. **Concrete masons** work with both pre-cast and poured-in-place concrete. Concrete can be used as both a structural and finish material.

How Much Can I Earn?

As an entry-level apprentice or mason, you can start at \$37,560 per year. As you learn and increase your skill set, you can advance to \$53,370 per year. An experienced mason can make upwards of \$57,780 a year!

SUPPORT ■ MENTOR ■ EDUCATE ■ INTRODUCE
NECMA Welcomes NEW Committee - "NECMA Women in Hardscape & Masonry"
 Sharing the vision of supporting, mentoring, educating and introducing young women to a rewarding career in the hardscape and concrete masonry industries.

Want to Support Women in our Industry?

Contact NECMA to
Register and Become
a Member Today



Contact the Women in Hardscape & Masonry
Chair Members
 Femm Singer - femm.singer@ideibergmaterials.com
 Lauren Longhi - lauren.longhi@oldcastle.com
 Judy True - jtrue@idealblock.com

SUPPORTING WOMEN IN THE HARDSCAPING & CONCRETE MASONRY INDUSTRY



necma
 New England Concrete Manufacturers Association
Reinvesting in the Industry

www.NECMA.com
 774.402.0653
 PO Box 1131 Webster, MA 01570



What Can I Expect from a Career in a Masonry?

Masonry is a highly precise craft. It requires great skill and attention to detail to work with the raw material and to install the finished product. Masonry is challenging and satisfying work. **No day or project is ever the same.** It can be **physically challenging** – there is lifting, climbing, and carrying involved. It is also **mentally challenging** – quick calculations, the ability to visualize, and the ability to make quick decisions are all part of the job. Someone who can do precise work and needs little supervision is a good candidate. Because of the nature of the craft's application, masons usually work outdoors.



Build an exciting career in construction



What Water Utility Technicians Do

Many people take it for granted that when you turn on a faucet you will be provided with safe, reliable drinking water. Water Utility Technicians play key roles in ensuring that drinking water flows through the distribution system to homes and businesses.

Technicians maintain the water distribution system by completing maintenance, repair, and installation of water service lines, mains, valves and hydrants. Technicians also replace old service lines by pulling new pipes inside old lines across roads where needed. They then restore roads, sidewalks, and other work sites to their original condition. These positions also install, replace and service the meters which track water usage.

Technicians use a variety of equipment ranging from heavy machinery such as excavators to electronic pipe locating equipment to electronic leak detection units. Regardless of the state of economy, safe drinking water is always needed!

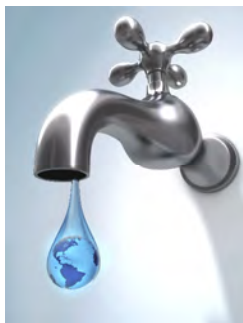


NHWWA
NH WATER WORKS ASSOCIATION

—Water Utilities

How Much Can I Earn?

As an entry-level water technician, you can start at \$35,770 - \$45,000 per year. As you learn and increase your skill set, you can advance in pay. An experienced water utility expert can make upwards of \$70,000+ a year!



What Can I Expect from a Career in a Water Utility?

Water is the one item that is essential to every life form! Everybody needs water! Water Utility Technicians must be able to work both independently and with a team. To succeed in this role, an individual must have strong basic math and hands on technical skills. They must be able to read plans and use their critical thinking capability to identify and resolve problems. Communication skills are key since technicians often interact with the public. Water Utility Technicians work both outdoors and indoors and these positions are physically challenging. Each job site has different challenges and the career itself offers a huge variety of work and a good starting salary.



*Clean drinking water is
essential for everyone!*



PENNICHUCK®

2023 Participating Schools

- ❖ Alvirne High School - Palmer CTE Center
- ❖ Bedford High School
- ❖ Belmont High School
- ❖ Berlin Middle High School - Berlin CTE Center
- ❖ Bow High School
- ❖ Charles Ott Academy
- ❖ Coe-Brown Northwood Academy
- ❖ Conant High School
- ❖ Concord High School
- ❖ Concord Regional Technical Center (CRTC)
- ❖ Dover High School Career Technical Center
- ❖ Gilford High School
- ❖ Goffstown High School
- ❖ Gorham Middle High School
- ❖ Hillsboro-Deering High School
- ❖ Hinsdale Middle High School
- ❖ Hollis Brookline High School
- ❖ Hopkinton High School
- ❖ Huot Technical Center - Laconia
- ❖ IMPACCT Academy (GSIL)
- ❖ Inter-Lakes Middle/High School
- ❖ John Stark Regional High School
- ❖ Kearsarge Regional High School
- ❖ Keene High School - Cheshire Career Center
- ❖ Kreiva Academy Public Charter School
- ❖ Learning Skills Academy
- ❖ Learning Skills Academy
- ❖ Londonderry High School
- ❖ Manchester School of Technology
- ❖ Mascenic Regional High School
- ❖ Merrimack Valley High School

2023 Schools (cont.)

- ❖ Milford High School & Applied Technology Center
- ❖ MY TURN - Central High School
- ❖ MY TURN - Franklin High School
- ❖ MY TURN - Nashua North & South
- ❖ MY TURN- West High School
- ❖ Newfound Regional High School
- ❖ Next Charter School
- ❖ NFI North Contoocook School
- ❖ NH Job Corps
- ❖ Nute Middle High School
- ❖ Oyster River High School
- ❖ Pembroke Academy
- ❖ Pinkerton Academy
- ❖ Portsmouth High School
- ❖ Prospect Mountain High School
- ❖ Raymond High School
- ❖ Region 14 - ATC at ConVal High School
- ❖ River Bend Career & Technical Center
- ❖ Rochester Learning Academy
- ❖ Salem High School
- ❖ Sanborn Regional High School
- ❖ Seacoast School of Technology
- ❖ Somersworth CTE Center
- ❖ Souhegan High School
- ❖ Spark Academy of Advanced Technologies
- ❖ Sunapee Middle High School
- ❖ Timberlane High School
- ❖ Wediko School
- ❖ White Mtns Reg High School
- ❖ Wilton - Lyndeborough Cooperative HS

2023 Schools (cont.)

- ❖ Windam Regional Career Center - VT
- ❖ Winnacunnet High School
- ❖ Woodsville High School



Promoting The Construction Industry
To New Hampshire's Youth

A huge thank you to our very generous event sponsors!

Platinum Sponsors

Cianbro
Eversource
Fulcrum Associates, LLC
Green Mountain Communications, Inc.
I Build NH/VT (an initiative of ABC NH/VT)
IBEW 490 Electrical Training Center
Lincoln Tech
Longchamps Electric/ECBA
Milton CAT
New England Laborers' Apprenticeship Program
NH Public Works Association
Northeast Paving & Cold River Materials
Pike Industries, Inc
Reed & Reed
Southern New Hampshire University
Stay Safe Traffic Products, Inc.
Manchester Community College
New Hampshire Army National Guard
Stay Safe Traffic Products, Inc.

Gold Sponsors

Asplundh Tree Expert
Dead River Company
DECCO, Inc.
Maine Drilling & Blasting
Optiline Enterprises, LLC
Palmer and Sicard, Inc
Pennichuck Water Works
Sargent
Terracon Consultants
The Rowley Agency, LLC

A huge thank you to our event sponsors!

Silver Sponsors

D&S Excavation
Granite State Plumbing & Heating, LLC
Lakes Region Community College Electrical
Technologies
Methuen Construction
Multi-Weld Services, Inc.
New Hampshire Home Builders Association
North Country Golf Car
Skilled Trades Partners

Bronze Sponsors

Bensonwood Homes
Charters Brothers Construction, LLC
Fuss & O'Neill
Mas-Con Corporation
Milton Rents
NEC Group
New England Concrete Manufacturers Assoc
New England Kenworth
New Hampshire Department of Transportation
New Hampshire Good Roads Association
New Hampshire Water Works Association
North Branch Construction
NorthPoint Construction Management, LLC
Piscataqua Landscaping & Tree Service
S. W. Cole Engineering, Inc.
Sheet Metal Local 17 NH Training Center
Sitech
Tree Line
Universal Technical Institute

Food Options

Food stations are beyond the center field
at the edge of the event grounds
near the plow truck exhibit.

SPECIAL THANKS TO:



What is NHCCD?

New Hampshire Construction Career Days (NHCCD) exposes New Hampshire high school students to possible career paths in both the construction and transportation industries through a hands-on exhibits and educational resources. Labor unions, construction companies, school districts, state agencies, trade and professional organizations collaborate to provide the students with an introduction to various aspects of construction.

This event increases career awareness in the construction and transportation industries through hands-on experience with heavy equipment, welding, small tools, plumbing, electrical wiring, surveying, wastewater management, bridge construction, land clearing, underground utilities, and other construction related jobs. Several secondary educational resources and career training pathways are also available for students to explore.

Professionals from a wide array of construction related work are available to speak with students and answer questions about their experiences in the construction industry and why they

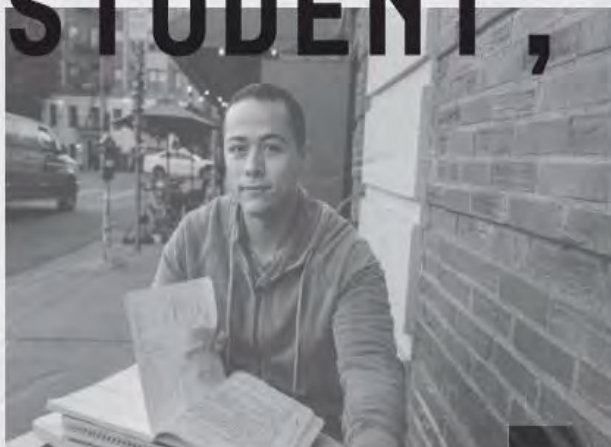
How you can help...

If you loved this event, help spread the word

LIKE US ON FACEBOOK [NHCCD4u](https://www.facebook.com/NHCCD4u)

www.nhccd.weebly.com

MORE STUDENT,



LESS STUDENT DEBT.



NATIONALGUARD.COM/NH

