



**2022**



**2022**



**Thursday and Friday  
September 22nd & 23rd, 2022  
8:00 am - 12:30 pm**

## **2022 Exhibitors & Equipment Donators**

- ❖ A.J LeBlanc Heating, Inc.
- ❖ ACE Mentor NH
- ❖ Advantage Truck Group
- ❖ Alta Equipment Company
- ❖ Apprenticeship NH
- ❖ Apprenticeship NH-High School
- ❖ Asplundh Tree Expert LLC
- ❖ Associated Builders & Contractors  
NH/VT
- ❖ CCB, Inc.
- ❖ Chinburg Builders
- ❖ City of Concord, NH
- ❖ Cold River Materials
- ❖ Commercial Driving School
- ❖ Contoocook Artesian Well Company
- ❖ DECCO Inc.
- ❖ E.D. Swett, Inc.
- ❖ Eastpoint Rentals
- ❖ ECBA - Electrical Contractor  
Business Assoc.
- ❖ Eckman Construction
- ❖ EJ Prescott
- ❖ Eversource Energy

## **2022 Exhibitors & Equipment Donators**

- ❖ Fuss & O'Neill, Inc.
- ❖ Girls at Work, Inc.
- ❖ Green Mountain Communications
- ❖ HAWSCO
- ❖ HP Fairfield
- ❖ IBEW LU 490 JATC
- ❖ Industrial Safety & Rescue
- ❖ JDS Flooring Associates LLC
- ❖ Jeremy Hiltz Excavating, Inc.
- ❖ Keene State College
- ❖ Lakes Region Community College
- ❖ Lewis Builders Development
- ❖ Lincoln Technical Institute
- ❖ Longchamps Electric Inc.
- ❖ Lucas Tree Experts
- ❖ Maine Drilling & Blasting
- ❖ Manchester Community College
- ❖ Manchester Department of Public Works
- ❖ MBCEA NEC
- ❖ Methuen Construction
- ❖ Milton Cat
- ❖ Modern Link Communications

## **2022 Exhibitors & Equipment Donators**

- ❖ Mongoose Power Solutions  
/ On Site Power Academy
- ❖ Multi-Weld Services, Inc.
- ❖ NAWIC
- ❖ New Boston Highway Department
- ❖ New England Chapter ISA
- ❖ New England Kenworth
- ❖ New England Laborers' Training  
Trust Fund
- ❖ New Hampshire Department of  
Transportation
- ❖ New Hampshire Home Builders  
Association
- ❖ NH Army National Guard
- ❖ NH Good Roads Association
- ❖ NH JAG
- ❖ NH Land Surveyors Association
- ❖ NH School of Mechanical Trades
- ❖ NH State Dept. of Education
- ❖ NH Water Works Association Young  
Professionals
- ❖ NHDOT - Bureau of Environment

## **2022 Exhibitors & Equipment Donators**

- ❖ NHDOT - Survey Crew
- ❖ NHTI - Concord's Community College
- ❖ North Atlantic States Carpenters  
Training Fund
- ❖ North Branch Construction
- ❖ Northeast Paving
- ❖ Northern New England Welding  
Institute
- ❖ Northern Tree
- ❖ Optiline Enterprises
- ❖ OSHA
- ❖ OSHA Training Institute Education  
Center
- ❖ Palmer and Sicard
- ❖ Pennichuck Water Works
- ❖ Pike Industries
- ❖ Portsmouth Naval Shipyard
- ❖ Reed & Reed
- ❖ Reeds Ferry Sheds
- ❖ Renaissance Acres Tree Care
- ❖ Robert Starace Homes, LLC
- ❖ Sargent

## **2022 Exhibitors & Equipment Donators**

- ❖ Sheet Metal Local 17NH Training
- ❖ Sitech Northeast
- ❖ Southern NH Services, Inc. / WIOA Adult
- ❖ Stay Safe Traffic Products, Inc.
- ❖ Terracon Consultants, Inc.
- ❖ The New England Consortium at UMass Lowell
- ❖ United Construction and Forestry
- ❖ Universal Technical Institute
- ❖ USDOL Office of Apprenticeship
- ❖ Vermont State University
- ❖ Wallace Building Products Corporation
- ❖ Wallboard Supply
- ❖ White Mountains Community College

**HUGE thanks to all our 2022 exhibitors!**



# NH Construction Career Days

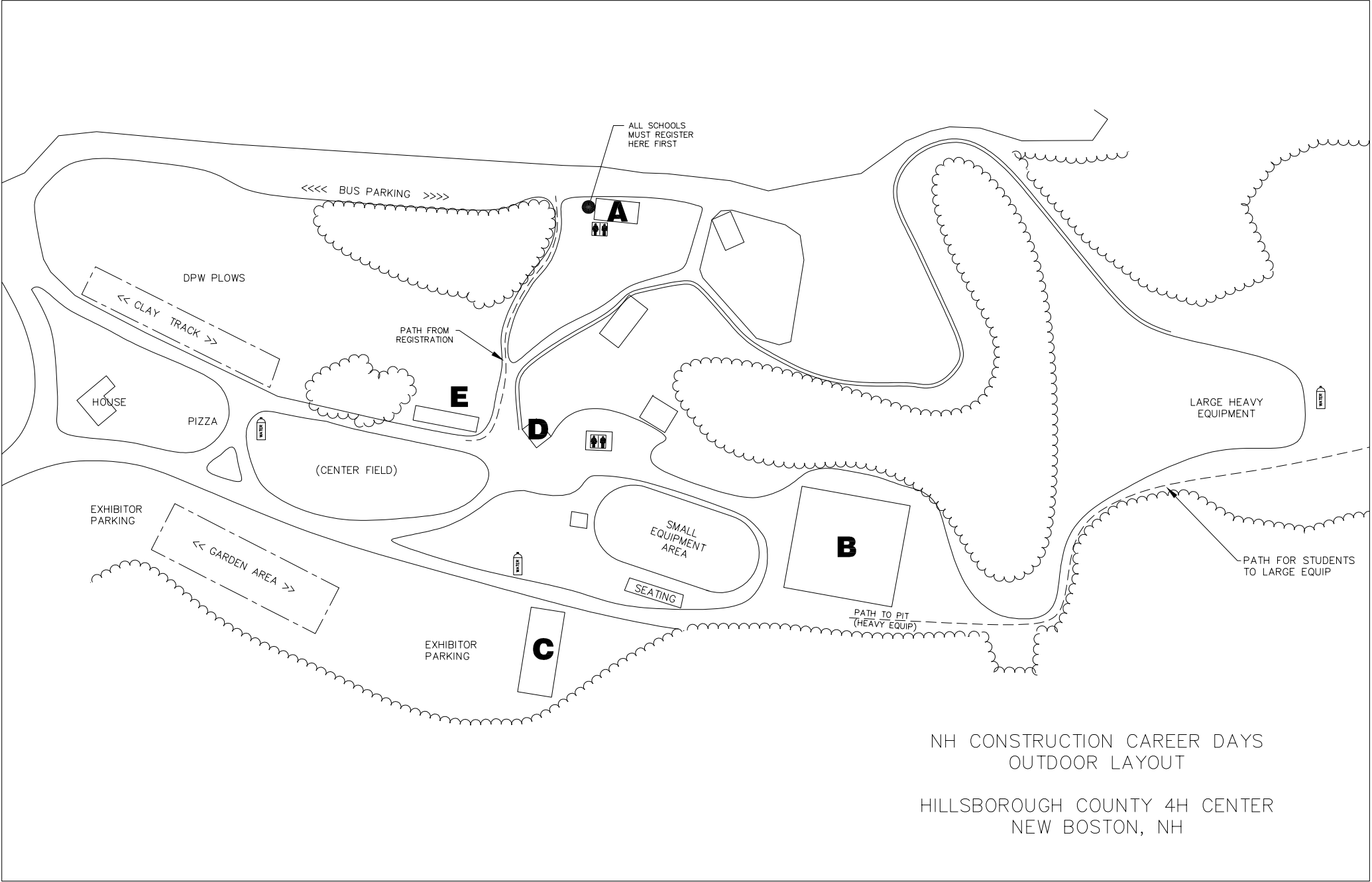
## Event Rules

- ❖ Safety is number one - hard hats and safety glasses must be worn at all times.
- ❖ Closed toed shoes are required at this event.
- ❖ Bracelets issued at entry **MUST BE** worn.
- ❖ DO NOT cross caution tape at any point on fairgrounds, unless instructed by operator or NH-CCD Staff.
- ❖ NO SMOKING.
- ❖ Represent your school and community professionally and respectfully.

Anyone violating these rules will be promptly directed to “get back on the bus”

***Thank you for joining us and  
have fun!!***







# Food Options

Pizza, burgers and hot dogs  
will be available for purchase.

Food stations are beyond the center field  
at the edge of the event grounds  
near the plow truck exhibit.

SPECIAL THANKS TO:



**Domino's**

553 MAST ROAD  
GOFFSTOWN, NH



## Preparing New Hampshire's Construction Professionals

Degrees in:

- Construction Management
- Construction Safety
- Safety & Occupational Health
- Architecture
- Sustainable Product Design

*CTE students: Earn college credits for completing a CTE program when you enroll at KSC – ask us how!*

[admissions@keene.edu](mailto:admissions@keene.edu)

[www.keene.edu/admissions](http://www.keene.edu/admissions)

[www.keene.edu/cte](http://www.keene.edu/cte)



**Work***WISE*  
NH 

**Proudly Serving the  
NH Construction  
Industry**

Head off safety and compliance problems before they happen with WorkWISE NH. Free, confidential, and proactive on-site consultations help you identify potential issues and develop strategies to keep employees safe and healthy.

[www.keene.edu/workwisenh](http://www.keene.edu/workwisenh)



# Door & Hardware

## How Much Can I Earn?

As an entry level technician in the fabrication shop, warehouse or technical office position you could start at \$46,190/year.

As you become more proficient and hone your skills, a median salary can be as much as \$63,510/year.

DHC and DHSC credentials can earn you up to \$80,832/year.

As a skilled credentialed consultant expect a six-figure salary.

## What Can I Expect from a Career in the Door & Hardware Industry?

The skills of Door & Hardware specialists provide the balance of **life safety and security** for the millions of people who work, play and live in buildings. Those who are working toward or have already achieved—a certified consultant status, know the many of hours it takes to learn the aspects of the Door & Hardware industry, plus the **attention and effort** required to hone that knowledge into a skill that will satisfy the many different needs of a building. Door & Hardware experts are not just an **elite niche** in the Construction Industry, but an integral one!

## What do Door & Hardware Technicians and Professionals do?

The Door & Hardware Industry provides **specialized products and services** to the construction industry. The door, frame, and hardware which make up the door openings that we walk through every day are actually **very complex** and technical assemblies. Technicians are also responsible for providing the correct products so that they **meet all building codes**, which include Fire Code, Life Safety Code, and ADA (Americans with Disabilities Act) Standards. Consultants and specification writers often advise owners, developers and architectural design teams as to the best product mix for their project. Detailers use their technical skills to develop door and hardware schedules.

In distributorships there are often fabrication shop and warehousing positions, along with office positions, such as estimator and purchaser at the entry level. Sales and Project Management would be junior level positions, and beyond that are Door & Hardware Technician, or DHT. Consultants are involved at each project level. Certified Consultants have the widest knowledge base and are highly skilled so .... The person that knows the most can earn the most.



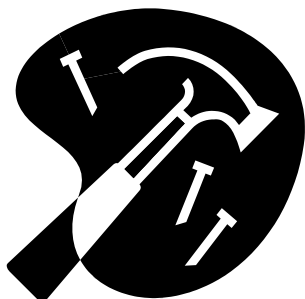
# Wallace

build sustainably. build profitably.



New Hampshire Jobs for  
America's Graduates

Preparing Youth for  
future success!



## What Carpenters Do?

Carpenters are key to the success of a construction project. They **cut, shape, fit, and assemble** building materials to construct buildings, bridges, highways, docks, and industrial plants. Carpenters today build with wood, metal, concrete, plastics, composites of multiple materials, and more. Following blueprints, they **measure, lay out material, and then build** foundations, walls, floors, ceilings, and roofs. As a carpenter, you can specialize in areas like structural framework, concrete formwork, interior trim and cabinetry, commercial carpentry, and more. In this craft, you get to use cool power tools like pneumatic nail fasteners, power saws and drills, and laser leveling tools.

## How Much Can I Earn?

As an entry-level apprentice or carpenter, you can start at \$39,440 per year. As you learn and increase your skill set, you can quickly advance to a median salary of \$50,900 per year. An experienced carpenter can make upwards of \$59,590 a year!

# Carpentry





### **What Can I Expect from a Career in Carpentry?**

Carpentry is challenging and satisfying work. **No day is ever the same.** Even the same job site is different each day. It can be **physically challenging** – there is lifting, climbing, and carrying involved. It is also **mentally challenging** – math, quick calculations, the ability to visualize, and the ability to make quick decisions are all part of the job. Someone who can do precise work and needs little supervision is a good candidate. **Carpenters are in high demand** for any given job. If you enjoy hands-on work, working outdoors, and seeing the results of your work, you can go far in this field.



# **HARVEY**



**build an exciting career in construction**

Join a group of professionals who are dedicated to building New Hampshire's economy by providing quality environmental responsible housing, creating good paying jobs and advocating on your behalf.



NH Home Builders Association | 119 Airport Road | Concord, NH | 603-228-0351 | [www.nhhba.com](http://www.nhhba.com)



# NAWIC

The National Association of  
**Women in Construction**

*Leading  
Builders.*

***Building  
Leaders.***



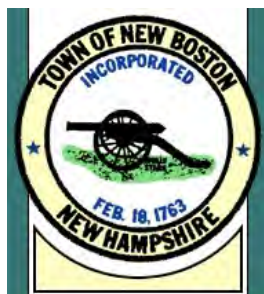
**Flooring, LLC**

*Established 2001*

**The Contractor's Choice**

**Builder  
Commercial  
Property Management**

5 Commerce Avenue  
Londonderry, NH 03053  
603-471-1821  
[www.FloorNH.com](http://www.FloorNH.com)







# ALTA EQUIPMENT COMPANY

## NO ONE CAN OFFER YOU MORE

Northland JCB is now Alta Equipment Company, one of the biggest, fastest growing equipment dealers in the United States. More quality equipment manufacturers, more service techs, better parts availability, and a support network that results in more uptime for your business. We look forward to growing with you and being there for you every step of the way. **We are Alta.**

114 Hall St. Concord, NH 03301 • 800-Go-2-ALTA • [AltaEquipNE.com](http://AltaEquipNE.com)



# A GREAT PLACE TO WORK, RIGHT IN YOUR NEIGHBORHOOD

- ▶ Full-time, part-time, and internship opportunities in a variety of fields
- ▶ Modern technology and state-of-the-art facilities
- ▶ Competitive pay and benefits
- ▶ Extensive training programs and resources
- ▶ Tuition reimbursement

**Milton**



[Miltoncat.com](http://Miltoncat.com)

As a privately held company headquartered in Milford, MA, **Milton CAT** is the Northeast's premier dealer for Caterpillar machines, engines, power systems equipment, parts, and service. We also sell and support complementary product lines including Genie, Weiler, and Sullair.

**SITECH**  
NORTHEAST

[Sitechnortheast.com](http://Sitechnortheast.com)

**SITECH Northeast** is an authorized, independent provider of Trimble positioning, machine control technology, training, support, and service. We provide customized construction technology solutions to a variety of industries including general excavation, roadbuilding, utility work, and residential development.

**To learn more about the opportunities at Milton CAT  
and SITECH Northeast visit: [Miltoncat.com/careers](http://Miltoncat.com/careers)**

**30 Industrial Drive Londonderry, NH, 03053**

Milton CAT and SITECH Northeast are equal opportunity employers that value the strength diversity brings to the workplace.

# Equipment

## What Equipment Operators Do

Equipment is a huge part of almost any construction project, residential or commercial, and includes bulldozers, excavators, forklifts, skid-steers, and of course, cranes. **Construction equipment operators use machinery to move both materials and earth before and during the construction process.** They clear the site, drive piles for the foundation, install underground utilities, build roads and move materials around the site as needed. Another part of this job involves setting up and inspecting equipment, and may also include making adjustments, performing maintenance, or minor repairs. Due to the increasing use of computerized controls, understanding of electronics and mechanical aptitude is critical.

## How Much Can I Earn?

As an entry-level equipment operator, you might start at \$39,080 per year. As you learn and increase your skill set, you can quickly advance to a median salary of \$51,830 per year. An experienced operator can make upwards of \$59,650 a year!



Commercial Driving School  
[www.cdsofnh.com](http://www.cdsofnh.com)  
(603)715-2559  
NH's Only Private Truck School

*Jeremy*

**HILTZ**  
**excavating Inc.**

## **What Can I Expect from a Career Operating Construction Equipment?**

Equipment operation is a **critical and complex process**, and takes a **highly-skilled person that can concentrate and focus on the task at hand**. There is a good demand for operators throughout the country. Operators typically work outdoors and may work irregular hours to keep pace with the project. Equipment operators need to be in good physical condition, have good balance, be able to judge distances, and should not have a fear of heights. When first starting out, equipment operators will handle light machinery under the supervision of an experienced operator. With time and experience, operators can advance to heavier equipment such as bulldozers and cranes.



**NEW ENGLAND  
KENWORTH**

**ATG**  
ADVANTAGE TRUCK GROUP  
WE DRIVE TRUCKS

EXPERIENCE  
THE COMPENSATION & BENEFIT PACKAGES  
OF THE ATG NETWORK

**NOW HIRING!**  
IN MA/NH/VT

AdvantageTruckNE.com  
(888) 874-9124





# Welding

## What Welders Do?

Welders apply heat to metal parts to join them together by making a permanent bond. Because of its strength, welding is used to join beams when constructing buildings, bridges, and connecting pipes. There are several different types of welding in use, depending on the material being welded and its intended use.

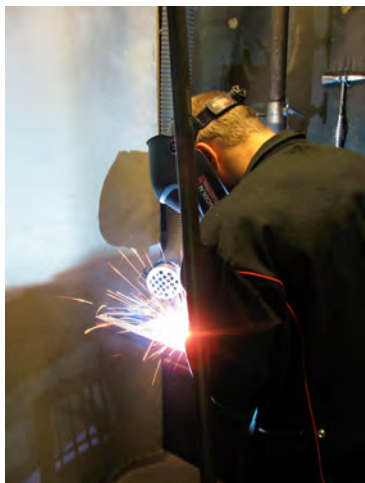
**Arc welding** is the most common type. This uses a welding rod carrying an electrical circuit. The heat created by the current causes the steel core of the rod and the surface being welded to melt together.

**Gas tungsten arc or TIG welding** is often used with stainless steel or aluminum and utilizes welding rods.

**Gas metal arc or MIG welding** is often used with a spool of continuously fed wire. This allows the welder to join longer stretches of material.

## How Much Can I Earn?

As an entry-level apprentice or welder, you can start at \$38,110 per year. As you learn and increase your skill set, you can quickly advance to \$49,440 per year. An experienced welder can make upwards of \$56,410 a year!



### **What Can I Expect from a Career in Welding?**

If you are interested in a career that is a combination of science, math, and art, welding is a great choice. It requires steady hand-eye coordination, knowledge of materials and metallurgy, and tactility. Welding is challenging and satisfying work. **No day or project is ever the same.** It can be **physically challenging** – there is standing, climbing, and bending involved. Some welders work underwater or high above the ground on a scaffold. It is also **mentally challenging** – the ability to read blueprints, calculate dimensions and materials needed, and understand basic chemistry is a big part of the job. Someone who can do careful work and needs little supervision is a good candidate.



## **LINCOLN TECH**



# Apprentices WANTED

## Join the Team

That's Building New Hampshire



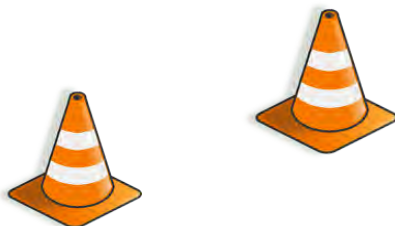
@Local668Laborers  
@Local976Laborers



To apply e-mail:  
[nick@nelapp.org](mailto:nick@nelapp.org)  
Web: [nelaborerstraining.org](http://nelaborerstraining.org)

Visit us









## What Line Workers Do?

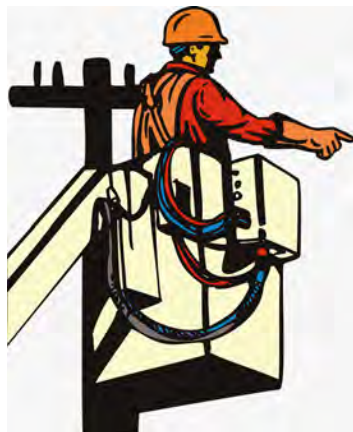
Line workers install and maintain the power grid, a network of power lines that moves electricity from generating plants to customers. They routinely work with high-voltage electricity, which **requires extreme caution**. The electrical current can range from hundreds of thousands of volts for long-distance transmission lines that make up the power grid to less than 10,000 volts for distribution lines that supply electricity to homes and businesses.

Line workers who maintain the interstate power grid work in crews that travel to locations throughout a large region to service transmission lines and towers. Workers employed by local utilities work mainly with lower voltage distribution lines, maintaining equipment such as transformers, voltage regulators, and switches. They also may work on traffic lights and streetlights.

## How Much Can I Earn?

As an entry-level line worker, you can start at \$64,440 per year. As you learn and increase your skill set you can quickly advance to a median salary of \$93,310 per year. An experienced line worker can make upwards of \$103,230 a year!

# Line Worker



# EVERSOURCE

## What Can I Expect from a Career in Line Work?

The Line worker occupation can be **physically demanding**. Line workers must be comfortable working at **great heights and in confined spaces**. Despite the help of bucket trucks, all line workers must be able to **climb** utility poles and transmission towers and **balance** while working on them. Their work often requires that they drive utility vehicles, travel long distances, and work outdoors. Line workers often must work under **challenging weather conditions**, such as in snow, wind, rain, and extreme heat and cold, in order to keep electricity and telecommunications flowing.

**Build an exciting career in construction**

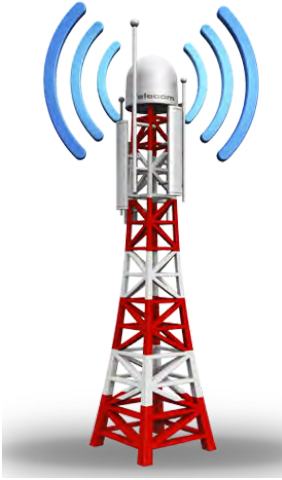


### **What can I expect from a career in the construction wireless communications industry?**

The construction wireless industry is rapidly transforming the way we live, work, and play for many years. There is consistent workload and excellent opportunities for career growth. Currently, the wireless construction industry has an estimated shortage of 20,000 workers nationwide.

Workers who are safety conscious, career oriented, and enjoy working outside are excellent candidates for this field. The work itself is a mix of skilled labor with technical aspects in a team environment.

We will provide you all the technical and safety training needed from entry level positions to management.



## What do construction tower technicians do?

Construction tower technicians build and maintain the wireless communication site infrastructures that help keep people connected with their mobile devices and public safety networks. The majority of the work is completed on the ground, some of the work is done at a bird's-eye view, throughout New England outdoors, and in some of the most picturesque scenery. Some of the jobsites are remote and require using equipment such as ATV's and snowmobiles. Sometimes, helicopters are used to deliver equipment in challenging site locations.

## How much can I earn?

As an entry-level telecommunications technician, you can start at \$50,980 per year. As you learn and increase your skill set you can quickly advance to a median salary of \$73,130 per year. An experienced installer can make upwards of \$81,950 a year!



**Build an exciting career in construction**



Join our team to help keep  
you wirelessly connected in  
New England!



603.717.7117  
[www.greenmtncomm.com](http://www.greenmtncomm.com)



*We are always  
proud to support*

## **New Hampshire Construction Career Days**



**INSURANCE • BONDS • BENEFITS**

...an Assurex Global Partner  
1-800-238-3840

Concord, NH • Portland, ME  
Bennington, VT • West Lebanon, NH

# **D&S**

**Inc.**



# **EXCAVATING**



## What can I expect from a career in Pipefitting?

Pipefitting is a career that draws upon numerous skills such as **math, design, print reading, physical dexterity and attention to detail**. Pipefitters sometimes work with a Pipe Welder to fabricate piping systems that are used to distribute gases or liquids. Pipefitters should be able to work within precise limits and standards of accuracy and make decisions based on measurable criteria while visualizing objects in three – dimensions as they translate drawings and plans into actual piping systems running throughout a building.

## What Pipefitters Do?

A Pipefitters typical duties include the selection of materials to meet the job specifications, planning the sequence of assembly to avoid obstructions, the preparation of the components for assembly and the installation of the piping sub-assembly. Pipefitters work with various piping materials such as carbon steel (CS), stainless steel (SS), copper and plastics. The joining methods vary from welding and threading for CS and SS to soldering and brazing for copper and fusion for plastics. Pipefitters are required to **work skillfully with their hands**, often times at elevations that require man-lifts, ladders, or scaffolding. A physically taxing trade- it requires **balance, strength, and dexterity**.

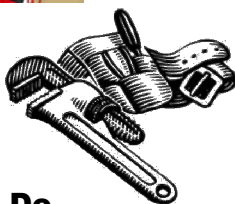
# Pipefitter

## How Much Can I Earn?

As an entry-level pipe fitter, you can start at \$39,810 per year. As you learn and increase your skill set, you can advance to \$54,660 per year. An experienced pipe fitter can make upwards of \$65,540 a year!







## What Plumbers Do

Plumbers **install and repair water, disposal, drainage, and gas systems** during the beginning stage of a construction project. Later in the project, they return to **install and connect appliances and other plumbing fixtures**, such as bathtubs, showers, sinks, toilets, dishwashers, and water heaters.

Plumbers can be found on just about every type of construction project: homes, office buildings, schools, hospitals, and power plants, to name just a few. This trade works with a wide variety of piping material, such as copper, plastic, cast iron, and steel. In addition to the prep work and appliance installation, plumbers cut and bend pipe to the needed length. They connect the pipes using appropriate fittings.

## How Much Can I Earn?

As an entry-level apprentice or plumber, you can start at \$39,810 per year. As you learn and increase your skill set, you can quickly advance to \$54,660 per year. An experienced plumber can make upwards of \$65,540 a year!

# Plumbing

## What Can I Expect from a Career in Plumbing?

From prep work to installing appliances to inspection and maintenance, **plumbing is all about variety**. Plumbers use many kinds of hand tools, should have **strong math skills**, and be able to **read blueprints accurately**. It is challenging and satisfying work. **No day is ever the same**. Even the same job site is different each day. It can be **physically challenging** – there is lifting, climbing, bending standing and carrying involved. It is also **mentally challenging** – knowledge of the building codes, quick calculations, and the ability to visualize are all part of the job. Most local communities require **plumbers to be licensed**. If you enjoy variety, hands-on work, working both indoors and outdoors, you can go far in this field.



**Now Hiring!**  
**Licensed Plumbers & Pipefitters**  
**More than a job—it's YOUR career!**  
**1-800-332-2611**

Call to schedule an interview TODAY!  
An Equal Opportunity Employer

[www.DECCO.com/careers](http://www.DECCO.com/careers)

**Build an exciting career in construction**



## Ask About Apprenticeship

Apprenticeships available in  
Plumbing • Sheet Metal • HVAC

**PALMER  
& SICARD, INC.**

Call today! (603) 731-6159

[WWW.PALMERANDSICARD.COM](http://WWW.PALMERANDSICARD.COM)

### What HVAC Professionals Do

Have you ever been hot and turned on the air conditioner, or cold and turned on some heat? Thank an HVAC (Heating, Ventilation, and Air Conditioning) technician for the ability to maintain your comfort level. HVAC professionals **install, maintain, and repair a building's heating, cooling, and air circulation systems.** HVAC professionals **actually perform several trades and tasks.** They do some electrical work; carpentry; welding, piping; sheet metal; and even some IT work. In addition to heating and cooling, ventilation is a critical issue. The air in our buildings must be kept clean and circulated. HVAC systems can be installed both indoors and outdoors, depending on the structure. This trade works with a variety of material and equipment: air conditioners, fans, compressors, motors, heat pumps, furnaces, etc.

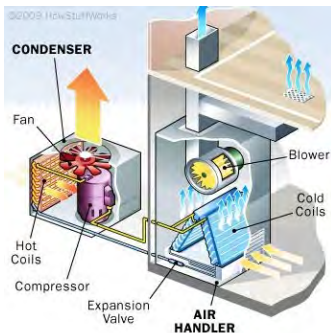
### How Much Can I Earn?

As an entry-level apprentice or technician, you might start at \$41,620 per year. As you learn and increase your skill set, you can quickly advance to \$58,160 per year. An experienced professional can make upwards of \$67,040 a year!

# HVAC

## What Can I Expect from a Career in HVAC?

Doing prep work in the beginning of a construction project means cutting holes in walls, ceilings, and floors to install ductwork, pipes, and other parts of the mechanical system. In later stages, you are working with the actual equipment and detailed, final connections. HVAC professionals use a variety of hand tools, should have **strong math skills**, and be able to **read blueprints and specifications accurately**. HVAC is challenging and satisfying work. **No day is ever the same**. It can be **physically challenging** – there is lifting, climbing, carrying, and balancing involved. It is also **mentally challenging** – knowledge of local building codes, organizational skills, and the ability to visualize are all part of the job. If you enjoy variety, hands-on work, and working both indoors and outdoors, you can go far in this field.





**Have you seen MCC lately?**



**Visit [www.mccnh.edu/openhouse](http://www.mccnh.edu/openhouse)  
for a list of upcoming Open House dates**

**1066 Front St., Manchester, NH | (603) 206-8100 | [mccnh.edu](http://mccnh.edu)**



# Explore with us



Contact Your  
Navigator

(603) 647-9700

[Terracon.com/Manchester](http://Terracon.com/Manchester)

- Facilities
- Environmental
- Geotechnical
- Materials



**LUCAS**  
TREE EXPERTS

Join the team: [lucastree.com/join](http://lucastree.com/join)

Careers  
at  
Lucas Tree

## FIND YOUR CREW

**"STABILITY, EXCELLENT TRAINING,  
STRONG SAFETY CULTURE, RELIABLE  
EQUIPMENT, SUPPORTIVE TEAMS"...**  
THESE ARE JUST SOME OF THE  
THINGS OUR TEAM MEMBERS SAY  
ABOUT WORKING AT ASPLUNDH. IF  
YOU ARE LOOKING FOR AN EXCITING  
OPPORTUNITY TO ADVANCE IN A  
CAREER WHERE YOUR DEDICATION,  
SKILLS AND EXPERTISE ARE VALUED,  
**CONTACT US TODAY.**



**ASPLUNDH**

[ASPLUNDH.COM](http://ASPLUNDH.COM) 1.800.248.TREE

**STRONG**

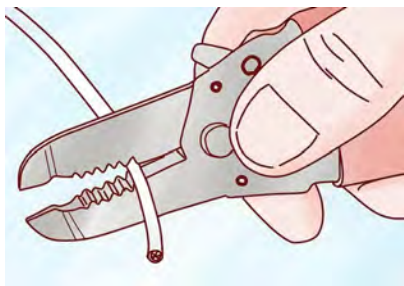
Scan to  
apply today!



Copyright © 2014 Aspen SpineMatics, Inc. All rights reserved.

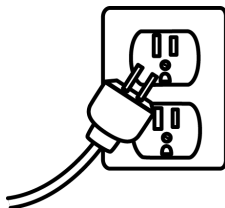
## What Electricians Do

Can you imagine a world without electricity? Electricians are critical not only to the construction industry but to modern day life as we know it. They **install, connect, test, and maintain electrical systems** that are used for a variety of purposes, from lighting homes to running machinery, communications equipment, and much more. Electricians need to be able to **read blueprints** to locate outlets, circuits, panel boards, and other equipment. In most areas, **electricians must be licensed**. In this craft, you'll need to know the National Electrical Code as well as state and local building codes. Your math skills and ability to visualize are very important. Electricity is serious: your work needs to be accurate, and you must be able to follow strict safety procedures.



## How Much Can I Earn?

As an entry-level apprentice or electrician, you can start at \$39,370 per year. As you learn and increase your skill set, you can quickly advance to \$57,280 per year. An experienced electrician can make upwards of \$66,790 a year!



# — Electrical



# MONGOOSE POWER SOLUTIONS

A black silhouette of a mongoose in a coiled, defensive posture, positioned to the right of the word "SOLUTIONS".

## **What Can I Expect from a Career as an Electrician?**

Electrical work is challenging and satisfying. **No day or project is ever the same.** Electricians work both indoors and outdoors. This craft can be **physically challenging** – there is standing, climbing, and carrying involved. It is also **mentally challenging** – code knowledge, math, quick calculations, the ability to visualize, and the ability to make quick decisions are all part of the job. Someone who can do precise work, has good hand-eye coordination, and needs little supervision is a good candidate. **The need for electricity is everywhere**, so jobs for electricians can be found all over the country.







# Safety

## What Safety Professionals Do

Safety Professionals outline and implement training programs about employee safety, accident prevention and investigation. They may also serve as client representation during regulatory audits and informal conferences, work-site compliance inspections, and safety program development/audits. As a safety instructor you might teach work place safety for electrical, confined space, chainsaw operation, work zone safety, OSHA certification classes and other site safety management.

## How Much Can I Earn?

As an entry level Safety Representative Professional, you can start at \$53,600 per year. As you learn and increase your skill set, you can quickly advance to a median salary of \$78,620 per year. An experienced Safety Professional can make upwards from \$95,720 a year!



### YOUR FIRST STEPS IN A CAREER AS A FIRST RESPONDER

- ON-SITE RESCUE TEAMS
- GET PAID FOR TRAINING



INDUSTRIALSAFETYRESCUE.COM  
(800) 244-1238

387 UNIVERSITY AVE.  
WESTWOOD, MA 02090



## **What Skills Do I need for a Career in Safety?**

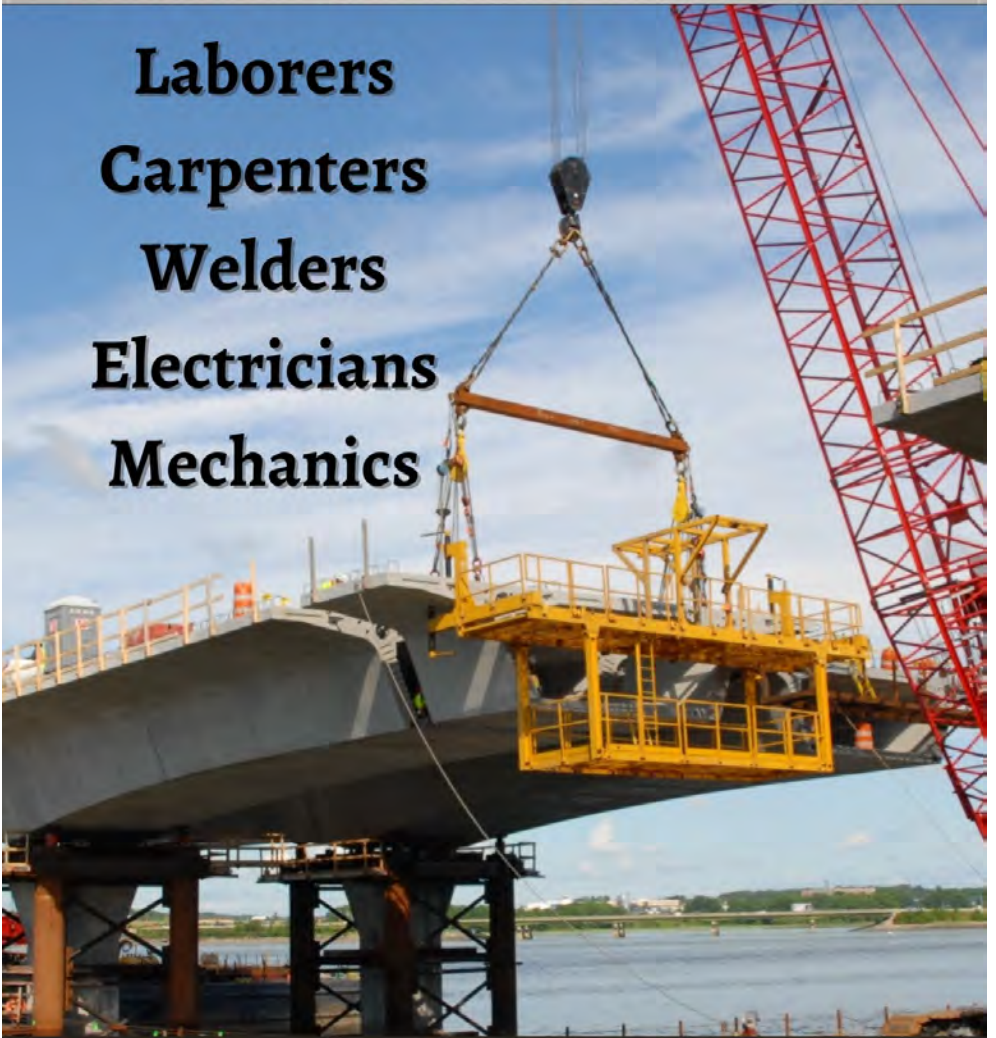
**Communication-** You will need to be able to communicate clearly with others and be able to spot potential hazards on a job site. **No day or event is ever the same.** You might be on different locations or working with different people every day. **Mentally challenging** – the ability analyze sites for potential hazards and risks. **Math and Accounting and Marketing** – There's real potential to be your own boss, and these fundamentals are needed to sell services or products and administer business funds. **High energy and outgoing personality** – Your passion will attract and engage people about the importance of safety.



**Build an exciting career in construction**

# REED & REED

**Laborers  
Carpenters  
Welders  
Electricians  
Mechanics**



**Join our TEAM!**

**Apply Online [www.reed-reed.com](http://www.reed-reed.com)**



## **Associated Builders and Contractors**

ABC is a proud supporter of New Hampshire  
Construction Career Days.

ABC members support career exploration  
opportunities and encourages all students to consider  
a career in the skilled trades!

[www.abcnhvt.org](http://www.abcnhvt.org)

### **WHY CONSTRUCTION?**

- Great income potential
- Equal opportunity
- Career stability
- Community impact
- Earn as you learn
- Team environment



CONNECTING  
CONSTRUCTION  
WITH  
WORKFORCE RESOURCES.

[www.IBuildNH.org](http://www.IBuildNH.org)

# Masonry



## What Masons Do

Masonry is one of the most widely used materials in construction. Sidewalks, many homes, and commercial structures like office buildings, schools, and sports complexes are made with some form of masonry.

**Bricklayers** build walls, floors, fireplaces, chimneys, and other structures with brick, pre-cast masonry panels, concrete block, and other similar materials.

**Stonemasons** build stonewalls as well as set stone exteriors and floors, working with natural cut and artificial stone. Generally the work is non-residential.

**Concrete masons** work with both pre-cast and poured-in-place concrete. Concrete can be used as both a structural and finish material.

## How Much Can I Earn?

As an entry-level apprentice or mason, you can start at \$37,560 per year. As you learn and increase your skill set, you can advance to \$53,370 per year. An experienced mason can make upwards of \$57,780 a year!







### **What Can I Expect from a Career in a Masonry?**

Masonry is a highly precise craft. It requires great skill and attention to detail to work with the raw material and to install the finished product. Masonry is challenging and satisfying work. **No day or project is ever the same.** It can be **physically challenging** – there is lifting, climbing, and carrying involved. It is also **mentally challenging** – quick calculations, the ability to visualize, and the ability to make quick decisions are all part of the job. Someone who can do precise work and needs little supervision is a good candidate. Because of the nature of the craft's application, masons usually work outdoors.



**Build an exciting career in construction**





# — Drywall & Painting

## **What Drywall & Paint Professionals Do**

Once the interior of a building is roughed-out, painters and drywall professionals finish the walls and ceilings to make the surfaces clean, consistent, and attractive. They help make the building ready for occupancy. Drywall is the “skin” of a building’s interior; paint and other surface finishes are like a cosmetic.

**Drywall Installers** cut, fit, and fasten sheets of drywall to the inside framework of buildings. The sheets are generally in a standard size (4’x8’), and some custom cutting is almost always required to fit the design.

**Drywall Finishers** prepare the panels for painting by taping and finishing the seams where the sheets of drywall come together. They also sand and prepare the surface to receive its final finish coat.

**Painters** add color and finish to the drywall to be cosmetically pleasing.

## **How Much Can I Earn?**

As an entry-level drywall or painter professional, you can start at \$25,560 a year. As you learn and increase your skill set, you can advance to a



## What Can I Expect from a Career in Drywall or Painting?

If you are interested in handling a variety of tools, good at visualizing, and can do accurate work, dry walling & painting can be a great career. It requires hand-eye coordination, physical strength, and strong math skills, over all it is challenging and satisfying work. **No day or project is ever the same.** It can be **physically challenging** – there is standing, climbing, and bending involved, as well as standing on stilts. It is also **mentally challenging** – the ability to visualize and to calculate dimensions quickly is a big part of the job. Someone who can do careful, neat work and needs little supervision is a good candidate.

## BUILD YOUR CAREER WITH US



For More Information Visit:

[www.MethuenConstruction.com/Careers](http://www.MethuenConstruction.com/Careers)

# 603.328.2222



**Build an exciting career in construction**



# Join our amazing team!

**We are hiring!**

*start your career on day one  
with amazing benefits!*

- +** Medical, Dental & Vision
- +** 401(K) With Company Match
- +** Paid Time Off  
& Closed Holidays
- +** Competitive Pay

**Email Your Resume:**

[hr@wallboardsupplyco.com](mailto:hr@wallboardsupplyco.com)





# NEW HAMPSHIRE PUBLIC WORKS ASSOCIATION



**COLD RIVER**



**MATERIALS**



**NORTHEAST  
PAVING**



### **What Water Utility Technicians Do**

Many people take it for granted that when you turn on a faucet you will be provided with safe, reliable drinking water. Water Utility Technicians play key roles in ensuring that drinking water flows through the distribution system to homes and businesses.

Technicians maintain the water distribution system by completing maintenance, repair, and installation of water service lines, mains, valves and hydrants. Technicians also replace old service lines by pulling new pipes inside old lines across roads where needed. They then restore roads, sidewalks, and other work sites to their original condition. These positions also install, replace and service the meters which track water usage.

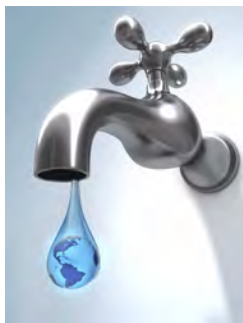
Technicians use a variety of equipment ranging from heavy machinery such as excavators to electronic pipe locating equipment to electronic leak detection units. Regardless of the state of economy, safe drinking water is always needed!

# **—Water Utilities**



## How Much Can I Earn?

As an entry-level water technician, you can start at \$35,770 - \$45,000 per year. As you learn and increase your skill set, you can advance in pay. An experienced water utility expert can make upwards of \$70,000+ a year!



## What Can I Expect from a Career in a Water Utility?

Water is the one item that is essential to every life form! Everybody needs water! Water Utility Technicians must be able to work both independently and with a team. To succeed in this role, an individual must have strong basic math and hands on technical skills. They must be able to read plans and use their critical thinking capability to identify and resolve problems. Communication skills are key since technicians often interact with the public. Water Utility Technicians work both outdoors and indoors and these positions are physically challenging. Each job site has different challenges and the career itself offers a huge variety of work and a good starting salary.



*Clean drinking water is  
essential for everyone!*



**PENNICHUCK®**





# Civil Engineer

## **What Civil Engineers Do**

Civil engineers plan and design buildings, bridges, roadways, dams, and tunnels. They work closely with structural and geotechnical engineers to utilize the best building materials for each job while taking into account safety factors such as soil and climate conditions. Civil engineering is very closely related to Environmental Engineers who work to improve the natural environment, provide clean water through complicated treatment systems, design landfills and help remediate pollution. In this career, you may design and/or provide construction inspection of a new water, drainage or sewer piping system. Civil Engineers typically work at a private consulting firm, for a site developer, construction contractor, at NHDES, NHDOT, or for a Town or City in their Engineering Department.

## **How Much Can I Earn?**

As an entry-level civil engineer, you can start at \$63,110 per year. As you learn and increase your skill set, you can quickly advance to \$85,510 per year. A skilled and experienced civil engineer can make upwards of \$103,190 a year!

## What Can I Expect from a Career in Civil Engineering?

Civil Engineers must have good leadership skills as they are often responsible for an entire project's design and implementation. **Mentally challenging** - strong math and technical skills, good visualization and ability to read blueprints and critical thinking, are needed to solve complex problems and identify potential solutions. **Communication skills** are key when presenting projects to clients or the public. As a Civil Engineer you will be working in a **team environment** to see a project through completion. Many civil engineers are **full-time construction inspectors** and must be very observant and be able to think on their feet to deal with field changes as they arise. Civil Engineers work both outdoors and indoors as they do the various parts of their job. Each job site has different challenges and the career itself offers a huge variety of work and a great starting salary.



**QUANTUM**  
CONSTRUCTION  
CONSULTANTS, LLC

27 LOCKE ROAD, CONCORD, NEW HAMPSHIRE 03301  
TEL: (603) 224-0859 | WWW.QUANTUM-CC.COM



# Surveyor

## What Surveyors Do

Surveyors measure and map the earth's surface to determine precise boundaries for land, water, and air spaces. Many different industries require surveyors including architectural & engineering firms, forensics, government agencies, mining & utility companies, & real estate developers. Land surveyors research legal records, analyze data, and communicate their findings. Surveyors use a variety of tools, technical instruments, and computer software. They sketch, plot maps, photograph, and write reports. Construction surveyors are often the first professionals on the job site, they also are integral in rebuilding projects such as reconstructing buildings, roads and bridges after storms, earthquakes and wars. Hydrographic surveyors measure and map the location and shape of features under oceans, rivers and lakes. They use specialized technology to identify underwater hazards, look for oil, and guide dredging.

## How Much Can I Earn?

Entry-level surveyors earn approximately \$51,960 per year. With experience, you can quickly advance to a median salary of \$73,170 per year. A professional land surveyor can make upwards of \$82,700 per year!



## What Can I Expect From a Career in Surveying?

Surveying is generally a cooperative field, so good interpersonal skills, communication, and teamwork are key.

**No day or project is ever the same.** It can be **physically & mentally challenging** – standing & walking for hours, and carrying equipment. Good eyesight and hearing are important. You will be given a specific amount of responsibility during your land surveying internship, where you will spend a lot of time assisting in obtaining data in the field, then processing, compiling and aiding in the synthesis of data and creation of final work products. Boundary surveyors work with mathematical certainty and legal uncertainty. Attention to detail and good math skills are characteristics of a good candidate. Surveyors work in the field and the office for various parts of their job. According to U.S. Dept. of Labor the need for land surveyors will outpace the average growth for all occupations. The average age of many professional surveyors is 57, many states are losing 10% of these professionals to retirement every year.



NHLA.ORG BEASURVEYOR.COM





## Build your career in construction!

The construction industry has a wide variety of job opportunities ranging from equipment operators in the field to accountants in the office.



## Why choose a career in construction?

- Hands-on learning
- Impactful career path
- Flexible work environment (outdoors, indoors, or both!)
- Competitive pay



## Our story:

Pike Industries was founded in 1872 in New Hampshire. Through five generations of family leadership, the company has developed to become the largest aggregates, asphalt, and construction company in northern New England.

## What we do?

We are the leading highway contractor, as well as the largest producer of hot mix asphalt and construction aggregates in the region.

We help build our communities and the workers you see on the side of the road are just the tip of the iceberg of the variety of jobs in our company!

3 Eastgate Park Road,  
Belmont, NH 03220

[www.pikeindustries.com](http://www.pikeindustries.com)





# ***SARGENT***

## Join Sargent Construction Academy!

Sargent Construction Academy offers high school graduates an opportunity to learn about heavy civil construction and begin their career with Sargent! SCA is a fully paid apprenticeship program where students will familiarize themselves with the pace of construction life through hands-on learning and job shadowing. Once ready, SCA graduates are assigned to projects and jump into a full-time career with Sargent. No prior experience is required!

(Pictured above are some of the SCA class of 2022)



To learn more, visit [sargent.us/sargent-academy](https://sargent.us/sargent-academy)



# **2022 Participating Schools**

- ❖ Coe-Brown Northwood Academy
- ❖ Conant High School
- ❖ Concord High School Transition Program
- ❖ Concord Regional Technical Center (CRTC)
- ❖ CRTC Equity
- ❖ Dover Regional Career and Tech School (Dover High)
- ❖ Epping Middle High School
- ❖ Exeter High School
- ❖ Franklin High School
- ❖ Goffstown High School
- ❖ Granite Hill School
- ❖ Hillsboro Deering High School
- ❖ Hopkinton High School
- ❖ Hugh Gallen CTC
- ❖ Huot Technical Center
- ❖ Inter-Lakes Middle/High School
- ❖ John Stark Regional High School
- ❖ Kearsarge Regional High School
- ❖ Kreiva Academy Public Charter School
- ❖ Learning Skills Academy
- ❖ Londonderry High School
- ❖ Manchester School of Technology
- ❖ Mascenic Regional High School
- ❖ Merrimack Valley High School
- ❖ Milford High School
- ❖ Moultonborough Academy
- ❖ MY TURN - Central High School
- ❖ Nashua High North
- ❖ Nashua High South
- ❖ Nashua South/North MyTurn

## **2022 Schools (cont.)**

- ❖ Newfound Regional High School
- ❖ Next Charter School
- ❖ NFI North Contoocook School
- ❖ Nute Middle High School
- ❖ Oyster River High School
- ❖ Palmer CTE Center (Alvirne High School)
- ❖ Pembroke Academy
- ❖ Pinkerton Academy
- ❖ Pittsfield Middle High School
- ❖ Portsmouth High
- ❖ Prospect Mountain High School
- ❖ Raymond High School
- ❖ Region 14 Applied Technology Center
- ❖ Robert J. Lister Academy
- ❖ Salem CTE Center
- ❖ Sanborn Regional High School
- ❖ Seacoast School of Technology
- ❖ Somersworth HS/CTC
- ❖ Souhegan High School
- ❖ Spark Academy of Advanced Technologies
- ❖ Spaulding High School
- ❖ Sunapee Middle High School
- ❖ Timberlane HS
- ❖ Wediko School
- ❖ West High School
- ❖ Wilton Lyndeborough Coop
- ❖ Winnacunnet High School

***A huge thank you to our very generous event sponsors!***

**Platinum Sponsors**

Alta Equipment Company  
Associated Builders & Contractors NH/VT  
D&S Excavation  
Eversource Energy  
Green Mountain Communications  
Jeremy Hiltz Excavating, Inc.  
Keene State College  
Longchamps Electric Inc.  
Manchester Community College  
Milton Cat  
New England Laborers' Training Trust Fund  
NH Public Works Association  
NH Road Agents Association  
Pike Industries  
Reed & Reed  
Sargent  
Stay Safe Traffic Products, Inc.  
Wallboard Supply

**Gold Sponsors**

Asplundh Tree Expert LLC  
DECCO Inc.  
JDS Flooring Associates LLC  
Maine Drilling & Blasting  
Methuen Construction  
Mongoose Power Solutions | OnSite Power Academy  
Pennichuck Water Works  
Terracon Consultants, Inc.  
The Rowley Agency, Inc.

## ***A huge thank you to our event sponsors!***

### **Silver Sponsors**

Advantage Truck Group  
Build Your Future - NCCER  
Commercial Driving School  
Harvey Construction Corporation  
IBEW LU 490 JATC  
Industrial Safety & Rescue  
New Hampshire Home Builders Association  
NH Land Surveyors Association  
North Country Golf Car  
Palmer and Sicard  
Sheet Metal Local 17NH Training  
Universal Technical Institute  
Wallace Building Products Corporation

### **Bronze Sponsors**

A.J. Leblanc Heating, Inc.  
CCB, Inc.  
Cold River Materials  
Fuss & O'Neill, Inc.  
HP Fairfield  
Lincoln Technical Institute  
Lucas Tree Experts  
Modern Link Communications  
Multi-Weld Services, Inc.  
New England Kenworth  
New Hampshire Department of Transportation  
NH Good Roads Association  
NH JAG  
North Branch Construction  
Northeast Paving  
Optiline Enterprises  
OSHA Training Institute Education Center  
Quantum Construction Consultants, LLC  
Reeds Ferry Sheds

## What is NHCCD?

New Hampshire Construction Career Days (NHCCD) exposes New Hampshire high school students to possible career paths in both the construction and transportation industries through a hands-on exhibits and educational resources. Labor unions, construction companies, school districts, state agencies, trade and professional organizations collaborate to provide the students with an introduction to various aspects of construction.

This event increases career awareness in the construction and transportation industries through hands-on experience with heavy equipment, welding, small tools, plumbing, electrical wiring, surveying, wastewater management, bridge construction, land clearing, underground utilities, and other construction related jobs. Several secondary educational resources and career training pathways are also available for students to explore.

Professionals from a wide array of construction related work are available to speak with students and answer questions about their experiences in the construction industry and why they are so passionate about their career.

### *How you can help...*

If you loved this event, help spread the word  
LIKE US ON FACEBOOK [NHCCD4u](https://www.facebook.com/NHCCD4u)

Our gratitude to ***all of our volunteers*** who helped make NHCCD 2022 happen; especially,  
Chair, Catherine Schoenenberger;  
Director, Meghan Theriault; Director, Eric Gustafson;  
Cara Gustafson, Jennifer Landon, Sarah Whearty, and the Hillsborough County Youth Center Foundation's leadership.

[www.nhccd.weebly.com](http://www.nhccd.weebly.com)