



A special day for high school students to explore the wide variety of construction and transportation careers.

Labor unions, construction companies, school districts, state agencies, trade and professional organizations collaborate to provide the students with an introduction to various aspects of construction.

The Event Organizers Include:

- Associated Builders and Contractors, Inc. (ABC)
- Town of Goffstown-DPW
- NAWIC-Granite State Chapter #218
- National Construction Career Day
- NH Educational Representatives
- NH Public Works Association
- NH Road Agents Association
- Stay Safe Traffic Products, Inc.

Goals of New Hampshire Construction Career Days:

- Increase career awareness in the construction and transportation industry through hands-on experience with heavy equipment, welding, small tools, plumbing, electrical wiring and other construction related jobs.
- Provide educational resources and career training pathways for students.
- Increase the number of job placements in vocational, trade and technical jobs.

For more information contact:

Catherine Schoenenberger
 New Hampshire Construction Career Days, Inc.
www.nhccd.weebly.com
 Phone: 866-692-2114
 Email: nh-ccd@hotmail.com or staysafetraffic@aol.com

NH Construction Career Days Partners:

- | | |
|--|--|
| Advanced Welding Institute | Lakes Region Community College |
| American Steel & Precast Erectors | Lowes |
| Anderson Equipment Company (Hazleton) | Maine Drilling and Blasting |
| ASCE - American Society of Civil Engineers | Manchester Community College |
| Associated Builders & Contractors, Inc. (ABC NH VT) | Mas-Con Corp |
| Bay State Industrial Welding & Fabrication, Inc. | McFarland Johnson |
| Beauregard Equipment, Inc. | Michie Corporation |
| Bellemore Catch Basin Maintenance | Milton CAT |
| Boisvert Bros Tree Service | MSI Mechanical Systems, Inc |
| Bow Public Works | Multi-Weld Service, Inc |
| Caprioli Painting and CPI Floor Coating | New England Carpenters Training Fund |
| Carroll Concrete | New England Institute of Technology |
| Cianbro Corp | New England Laborers Training Trust Fund |
| City of Franklin | New England Laser & Transit Co. |
| Commercial Driving School | New London Public Works |
| Continental Paving | NH Land Surveyors Association (NHLSA) |
| Dig Safe | NHDOT |
| E.J. Prescott, Inc. | NH Technical Institute (NHTI) |
| EW Sleeper Co., Inc. | North Branch Construction, Inc. |
| Fournier Landscaping | NORTRAX Northeast, LLC |
| Girls at Work, Inc. | Palmer & Sicard, Inc. |
| Granite State Plumbing and Heating | Pembroke Towing Inc. |
| Hawkins Safety Equipment, LLC | Pike Industries, Inc. |
| Heavy Construction Academy | Portsmouth Naval Shipyard - Apprentice Program |
| Hews' Company LLC | Powerskills for Life, LLC DBA PS4L |
| Infinigy Surveying PLLC | R.S. Audley Construction |
| Injury Prevention Center at Dartmouth | Renaissance Acres Tree Care |
| Institute for Environmental Education | Robert Starace Homes, LLC |
| International Brotherhood of Electrical Workers Local 490 (IBEW) | Sandford Survey |
| Jamco Excavators | T-Quip Sales & Rentals Inc. |
| John Neville Excavating | Tree Care Industry Association |
| Katz Roadshow | Tuff-crete (Jamco) |
| | UNH College of Engineering |
| | Vermont Technical College |
| | Wentworth Institute of Technology |
| | White Mountain Community College |
| | Wood Craft |



New Hampshire Bringing Students Together with the Construction & Transportation Industries



Promoting The
 Construction Industry
 to New Hampshire's Youth

Promoting The Construction Industry

New Hampshire Construction Career Days

September 18th & 19th • 8am - 1pm • Hillsborough County 4-H Youth Center New Boston, NH



"This day made me really want to pursue a career in construction. It was a great, fun day!"



"I LIKED the heavy equipment"

HANDS-ON ACTIVITIES

By far the most popular area for students is the first hand experience to explore construction occupations including welding, plumbing, surveying, electrical wiring, hammering, brick laying, and using drills.

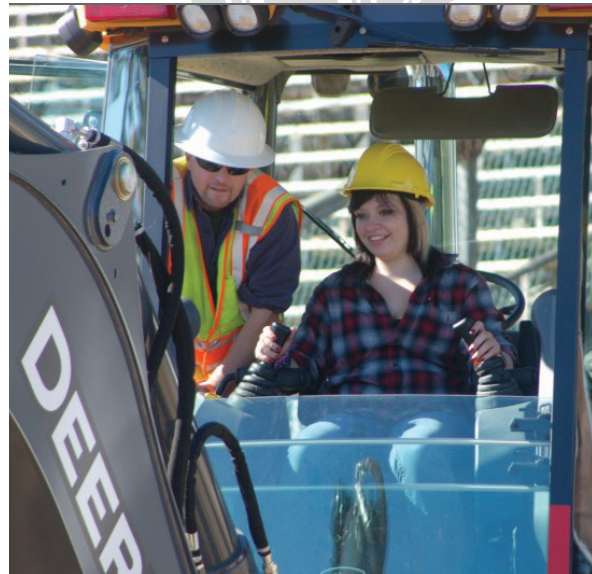


Also available for the students to observe is sewer video inspection truck, personal protection equipment, storm water run-off model, PVC piping demonstration and much more.



HEAVY EQUIPMENT DEMONSTRATIONS

Students experience first-hand heavy equipment, from general information instructions from the experts to being able to sit in the driver's seat. Constructing a dog house or building a shaker peg board from scratch, kept all the students clamoring for more. Students found they are exceptionally good on the heavy equipment simulator.



CAREER TRAINING PATHWAYS:

- High School Programs
- Registered Apprenticeships
- College 2 & 4 Year Programs
- Union Programs
- State & Local Government Programs

MEET:

- Contractors
- Trainers
- Program Representatives
- Journey Workers